

henleaze & westbury voice

June, 2026 Issue 137

www.henleazeandwestburyvoice.co.uk

FREE EVERY MONTH IN HENLEAZE, WESTBURY-ON-TRYM & WESTBURY PARK

Ofsted success for BFS

Staff and students at Bristol Free School celebrate a hugely successful Ofsted report, which rated the school as Strong in six out of seven categories – a rare feat under the new, tougher inspection framework



BRISTOL Free School is celebrating a highly successful Ofsted inspection.

The secondary school in Concorde Drive, which serves Westbury and Henleaze, was judged to be Strong in six out of seven areas.

Few schools have achieved such a high rating since the watchdog introduced a new and tougher inspection framework last November.

The Ofsted report said: "This is a highly ambitious and inclusive school. Pupils thrive here. Many pupils describe the strong sense of community and say that they feel proud to attend the school. Pupils feel safe, known and valued."

A team of five inspectors visited the 1,292 school for students aged 11 to 18 in March.

Turn to Page 3



Bowlers ready for challenge

Canford Bowling Club has taken on full responsibility for the green, grounds and clubhouse for 25 years and pledges to develop it for the community.

PAGE 27

Developers vow to heed feedback

The new owners of the St Christopher's site have unveiled initial proposals and say they will work with community groups to develop their plans.

PAGE 5

Inclusive group replaces WI

Westbury on Trym WI has closed after 33 years because of a decision to ban transgender members. It's been replaced by a new Women's Association.

PAGE 9

Need an Electrician ?



-Free Quotes

-Inspection and Testing

-New builds and Extensions

-Extra Sockets and Lights

-Fire Alarm, Smoke Detectors

-Anything Electrical we can do !!!

Full EICR Electrical Test from £105

Consumer unit change from £305

Elderwood Electrical

Electrical Installation, Maintenance and Testing

www.ElderwoodElectrical.com

Office:- 0117 9322379 Mobile:- 07725 058581

henleaze&westburyvoice

www.henleazeandwestburyvoice.co.uk

Henleaze & Westbury Voice contacts

Publisher

Emma Cooper

0117 908 2121 / 07715 770448

sales@henleazeandwestburyvoice.co.uk

Editorial

Linda Tanner

Rosie Watson

news@henleazeandwestburyvoice.co.uk

Advertising sales

0117 908 2121

sales@henleazeandwestburyvoice.co.uk



Follow us on Twitter
@henandwestvoice



Find us on Facebook
www.facebook.com/henleaze and westburyvoice

July deadline

Our June edition deadline is June 17th. To ensure your news or letter is included, please contact us by this date. Advertisers are also asked to contact us by the same date.

Your views

Letters for publication can be sent to the above email addresses or by post to Letters, Henleaze & Westbury Voice, 16 Ashmead Business Centre, Ashmead Road, Keynsham, BS31 1SX. The editor reserves the right to edit your letter.

Useful numbers

Bristol City Council

0117 922 2000

Citizens Advice Bureau

0344 499 4718

Police

www.avonandsomersetpolice.uk

General enquiries: 101

Emergency: 999

Fire

www.avonfire.gov.uk

General enquiries: 0117 926 2061

Emergency: 999

West of England Mayor -

Mayor Helen Godwin mayor@westofengland-ca.gov.uk
0117 428 6210 70 Redcliff Street,
Bristol BS1 6AL

NHS Health

Call 111

Well Aware (health and social care information)

www.wellaware.org.uk

Freephone: 0808 808 5252

We are Bristol helpline

Freephone 0800 694 0184

Mon-Fri 8.30am-5pm

Weekends 10am-2pm

Complaints

Despite our best efforts, we sometimes get things wrong. We always try to resolve issues informally at first but we also have a formal complaints procedure. If you have a complaint about anything in the Henleaze & Westbury Voice, contact the publisher using the details below. We aspire to follow the Code of Conduct of the NUJ (National Union of Journalists), which holds journalists to a high standard of behaviour.

Further details of the complaints process can be found on the Voice website here, or can be obtained by contacting the Publisher.

PUBLISHER'S NOTE: Henleaze & Westbury Voice is independent. We cannot take responsibility for content or accuracy of adverts, and it is advertisers' responsibility to conform to all relevant legislation. We cannot vouch for any services offered. Opinions are not necessarily those of the editor. Henleaze & Westbury Voice is distributed each month to residents. If for some reason you do not get a copy, please collect one from local pick-up points. Feedback is always welcomed, contact Emma Cooper on 0117 908 2121 or sales@henleazeandwestburyvoice.co.uk This month 8,500 copies will be distributed around Henleaze, Westbury Park and Westbury-on-Trym.



TREE SURGERY - PRUNING AND REMOVALS
SHRUB PRUNING AND HEDGE CUTTING

NUTHATCH
TREE MANAGEMENT
& CONSULTANCY

Contact us for a free consultation
tel: 07866980012
email: rich@nuthatchtrees.co.uk
www.nuthatchtrees.co.uk

PARKWAY
MERCEDES SPECIALIST

www.parkwaymercedes.com

Mercedes-Benz specialist
with over 35 years experience

- Full diagnostic equipment
- Factory trained technicians
- Collection delivery service
- Courtesy car on request
- MOT's • Servicing

Digital service book update

Tel: 0117 9656164
Parnall Road • Fishponds • Bristol • BS16 3JQ

NEWS

Headteacher Su King is departing Bristol Free School at the end of this school year after eight years at the helm. The Voice invited her to share her reflections.

"When I became headteacher of BFS eight years ago, the school had just been judged Requires Improvement by Ofsted. I remember on my first visit walking through the endless long white corridors which took minimal design to a whole new level! Despite this, I felt an immediate connection; I was struck by the warmth of the students, the genuine collaboration between staff and pupils, and the strong sense of community that surrounded the school.

"BFS has a unique history as one of the 10 original free schools, born out of local determination to create a secondary school that would allow friendships formed in strong neighbourhood primary schools to endure. That legacy mattered deeply to me, and it still does.

"When I took up the role in 2018, I was clear about what I hoped to achieve. I wanted BFS to be a place where children from all starting points could thrive and make excellent progress; a school that was about far more than examination results — where young people developed confidence,

Plenty to be proud about



values and a moral compass to help them navigate the complexities of modern Britain. I also wanted to strengthen the Sixth Form which, at the time, was small and struggling to grow, and to improve the physical environment so the school felt more like a true learning campus, both indoors and out.

"Like so many leaders, my early years as headteacher were shaped by the global pandemic. With the benefit of hindsight, school closures and the cancellation of exams had a profound impact on young people, and we continue to see the effects of those decisions today. Yet I remain incredibly proud of how the profession responded. At BFS, staff

adapted almost overnight, delivering live lessons and recorded teaching with creativity, care and resilience. We constantly evolved to meet the changing needs of our students, and that ability to respond, reflect and adapt is, I believe, at the heart of what makes a great school.

"In March 2026, Ofsted visited the school under the new inspection framework. I was delighted that the ambition and inclusive culture we had worked so hard to create were recognised. The school was judged to be Strong (the equivalent of the old Outstanding) in six of the seven areas inspected, which is extremely rare under the current framework. It felt like a real affirmation of the collective work of staff, students, and families across the community.

"There are many things I am proud of from my eight years leading BFS, but the transformation of the Sixth Form stands out. From just 75 students when I arrived, it has grown to over 300 young people, with results among the best in the South West. We have supported students into highly aspirational and competitive destinations, including more than 20 who have gone on to study medicine or veterinary science. These achievements reflect

not just academic success, but the belief students have developed in themselves and in their futures.

"More broadly, exam performance across the school has gone from strength to strength at both GCSE and A Level. Yet what matters just as much to me is the culture we have built. BFS is now a place where students from all backgrounds mix, learn and work together with warmth and respect. In an increasingly polarised world, that sense of belonging and shared purpose feels more important than ever and is, to my mind, an essential part of a truly good education.

"The physical environment of the school has also evolved far beyond those original white corridors! We now have improved IT provision, well-equipped technology workshops and striking student-created wall art that brings the buildings to life. There is still more to do outdoors, but I leave with a planning application for an astro turf pitch and a second MUGA submitted to Bristol City Council, and I very much hope to return one day to see those spaces in use.

"Bristol Free School has been a wonderful school for me to lead. I have been consistently supported by engaged parents, inspired by thoughtful and determined students, and privileged to work alongside dedicated, talented staff. While I will miss the school greatly, there comes a moment when the need for change and a sense of adventure make it the right time to pass the baton. I know the school will quickly become a huge part of the next headteacher's life, just as it has been of mine, and I wish them every success. BFS has so much to be proud of — and even more to look forward to."

Ofsted success

From Page 1

They rated the school as Strong for achievement, attendance and behaviour, inclusion, leadership and governance, personal development and wellbeing, and post-16 provision. Curriculum and teaching was judged to meet the Expected standard and safeguarding standards were met.

Ofsted praised the school's academic performance, culture and inclusive ethos, noting that "many pupils achieve highly, including those who are disadvantaged, and many make excellent progress from their starting points" and that outcomes have been "positive and sustained over a number of years".

They noted that pupils behaved exceptionally well. Ofsted also highlighted

the "impressive" efforts to support pupils' character and wider development, with a huge variety of clubs and opportunities on offer.

Headteacher Susan King said: "We are delighted Ofsted has recognised the ambition, care and professionalism that define Bristol Free School. This outcome is a testament to our staff, students and families, and to the supportive challenge of our governors and trust."

Chair of governors Anne-Marie Boyle said: "This report is a tribute to the hard work of Mrs King and our school leaders, students and staff, and to the partnership with parents and carers. We are excited about the future and remain committed to building on these strengths for every child at BFS."

Some articles have had to be held over until next month for reasons of space. The deadline for our July edition is June 17.

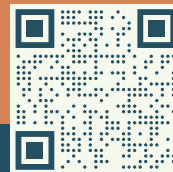


Biographies and Memorial Books

Ghostwriting > Book Design > Printing

Do you have a story to share?

Contact us to begin your book, and preserve your memories for generations to come.



www.carrinasbook.co.uk

COMMUNITY NEWS

HENLEAZE COMMUNITY FORUM

BRISTOL City Council encourages local communities to meet at least twice a year. Given the size of Westbury-on-Trym & Henleaze ward, Forums are held in both Westbury-on-Trym and Henleaze. A local organisation, in this case The Henleaze Society, is invited to facilitate meetings for Henleaze (including the part of Westbury Park within the ward).

The Forum is an opportunity for residents, and those working in the Henleaze area, to come together to exchange views on local issues and to meet our Ward Councillors and Neighbourhood Police.

The next Henleaze Community Forum will be held in the Leonard Hall, Trinity-Henleaze URC, Waterford Road on Monday 8 June (7pm to 8.30pm). There is no need to book places in advance. Please come along to share your views about local issues.

For further details, including notes from previous meetings, see www.henleazesociety.co.uk/henleaze-forum/

WESTBURY ON TRYM SOCIETY

SADLY, the dry April weather brought an earlier end to the excellent winter flower displays in the village centre. We are awaiting the planting of the summer displays to cheer the village up after the recent closures of three businesses – A&J shoe repairs, Blush card and party supplies and Preserve sustainable produce.

A new transport sub-group has been set up within the Society to continue the work undertaken informally by a local group, the Westbury on Trym 'Transport and Placemaking Group'. That group, now disbanded, considered possible solutions for reducing the impact of the additional traffic using the village arising from the major housing developments off the A4018, just over the Bristol boundary in South Gloucestershire – the 'Cribbs Patchway New Neighbourhood' or CPNN, as it is now called. The group's work culminated in a Discussion Paper, which was sent to Council officers in December, 2025, since when its activities have transferred to the Westbury on Trym Society.

The Society has expressed its

concern to the council's Transport committee over the continued neglect of improvements to the A4018 corridor beyond those currently taking place north of Charlton Road. We pointed out that works beyond this stretch of the A4018 had been a clear priority back in 2019, when a report prepared for the Council identified significant likely traffic and amenity harms in the corridor arising from the growth of road traffic between Bristol and the CPNN. The planning permission for the major housing developments identified the need for works on the A4018 corridor between the M5 and Henleaze.

Unfortunately, the measures set out in 2019 for mitigating the problems on the A4018 and in Westbury on Trym village met strong local opposition, leading to their almost complete abandonment. At that stage the local community received an assurance from the Council of a further, revised set of proposals in due course, after discussion with the local community beforehand, which was sadly lacking in 2019. However, since 2019, we understand that no further work has been undertaken on traffic mitigation in the Westbury on Trym area.

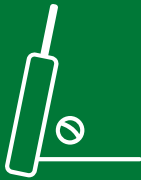
Whilst effective road improvements have taken place between Cribbs Causeway and the Crow Lane roundabout and an extensive two-year programme of works is now under way to extend these to Charlton Road, there are no plans beyond this. Without further work, traffic congestion will simply be transferred to the next sections of the A4018 – Passage Road and Falcondale Road - and to the feeder roads to and from Westbury on Trym, increasing rat running through the village centre. This will exacerbate the very same harms from the CPNN development that the Council declared it intended to address in 2019. The Society will press the council to re-commence work on plans to ease the problems in the A4018 corridor and in Westbury on Trym village.

The Society's June talk in Westbury library on Thursday 18th at 8pm will be given by Malcolm Neave on 'the Canals of England and Wales - from the transport network of the industrial revolution to the leisure industry of the current day'

Andy Renshaw, Chair Westbury on Trym Society

Westbury Fields

ST MONICA TRUST



A retirement village with a cricket pitch as its heart

To learn more about our **communities where older people flourish**, book your place on a guided tour by calling us on **0117 919 4272**, or visit www.stmonicatrust.org.uk for more information and details of available properties.

Properties from **£250,000**

Community fee and surrender fee apply



St Monica Trust

Registered Charity 202151



APPROVED OPERATOR



NEWS

Developers vow to listen to residents

DEVELOPERS are considering the views of local people after unveiling their initial plans for the future of the former St Christopher's School site.

Square Bay, the new owners of the five acre site next to the Downs, say they are working with community groups SCAN and Westbury Park Community Association as well as people living nearby to consider all concerns raised.

The intention of Square Bay, working with Acorn Property Group, is to convert the Grade II listed Grace House and five villas into housing and build 40 three-storey houses, as well as opening up public access to the green space.

A previous application to build a care home with 116 apartments in buildings up to six storeys was refused in 2023.

Both SCAN – St Christopher's Action Network – and WPCA have created 'planning briefs' calling for low density, low impact development.

Following the first consultation session in May, attended by more than 100 people, the two organisations have raised issues over parking, the height of the new houses, and security, and they are cautiously optimistic that the developers are listening to them.

Square Bay says it will hold a second session in the summer to show how it has acted on feedback to create its detailed proposals.

A spokesperson said: "This is a very special – but also challenging – site which will require a very sensitive and careful redevelopment. We are seeking to work collaboratively



The St Christopher's site

with the community, including using the community's planning 'briefs' as the starting point for our design.

"We have already engaged with local groups and representatives. But we want to hear from all neighbours and the wider community to ensure we get this right. We do not expect all residents to share the same priorities, but are committed to finding the most supportable, and viable, proposal."

Meanwhile, the owners have stepped up security at the site by installing a high steel fence. Property guardians for two of the buildings are also being considered. They are asking the community to get in touch if they see suspicious activity. Contact details can be found at <https://stchristophersredevelopment.co.uk> or residents can ring security firm Orbis on 0345 123 4357



Stoke Lane Dentistry
SPECIALIST AND GENERAL DENTAL CARE

Now welcoming
new patients

We are under new management
with a new, experienced team

Dentistry for children and adults including:

- Latest 3D imaging for diagnosis and treatment planning
- Hygienist Services, fluoride therapy and teeth whitening
- Root canal treatment, wisdom teeth removal
- Crowns, Bridges, Veneers, Dentures and mouth guards
- Gum disease treatment



Dr Armineh Arzandeh, Principal dentist

Anxious about treatment?

We offer a sedation service during your dental treatment

0% finance available for all treatments **over £300**

Monthly membership plans

including: regular check-ups, hygienist and 20% off all general treatments

Call 0117 962 9902 or email admin@stokelandentistry.co.uk for your first appointment

Scan for our booking page



NEWS

Three decades of fresh air and friendship

BACK in the early 90s, there was concern about 'the overgrown and unkempt valley' next to Glenavon Park in Stoke Bishop and several meetings were arranged with Bristol City Council, local residents and Avon Wildlife Trust to see what could be done.

In 1995, The Friends of Old Sneed Park Nature Reserve (the FOSPNR) was formed, a committee set up, and fundraising and work on the area begun. Members saw it as an opportunity for the community to come together to create and maintain an area of natural beauty in a residential area, and later realised its importance as an educational resource.

Since those early beginnings, much has changed. The reserve has been transformed with improvements such as creating new paths, hedge laying, removing scrub, planting new trees and shrubs, and the installation of a dipping platform to the lake. The water levels in



Old Sneed Park nature reserve

the lake were also raised, which involved the committee raising £50,000 from the Heritage Lottery Fund. With this money they employed contractors with machinery to remove the near-100% silt from the lake and dump it in three adjacent bunds.

Now, those more than three decades of hard work and dedication to preserving this 6.6 ha wildlife haven are being celebrated on **Sunday June 7** with the FOSPNR's anniversary afternoon. Originally planned last year to coincide with the actual 30-year anniversary, it was cancelled due to the weather, so fingers are crossed for more favourable conditions this year. Guided walks and talks will lead visitors through the beauty and diversity of the area, with expert guests sharing their knowledge of mini beasts, the wonder of trees and the plants of Old Sneed Park.

Poignant

To mark the anniversary last year, founding member and Honorary President, Eileen Stonebridge, wrote an article reflecting on the 30 years. She described how: *"After the initial launch, what followed was 30 years of hard work. Initially, we had two tasks: recruit members and raise funds. We were still novices in those days, with limited knowledge of wildlife or conservation, but then there were more staff available in the Bristol Parks Department, and we had a Site Manager, Gordon Milward, and the help of one of the city ecologists, Helen Hall. There were opportunities to learn from staff at Bristol Regional Environmental Records Centre, Bristol Naturalists, and various experts with whom we had contact.*

"Space does not allow the recounting of all the work of 30 years. However, the first 25 are recorded in a booklet [which was written by Eileen]. The work has involved practical conservation done by volunteers, big projects carried out by professionals with the help of volunteers, education in the form of guided walks and talks, a lively and informative website organised by Graham Rooth."

Eileen died last November, so her concluding words are now rather poignant, but still resonant: "We have not come to the end of the story! There are now new faces keeping up the work of planning and organising events, as well as the general running of an active organisation. Long may it continue."

The FOSPNR has also carried out practical conservation work to restore, strengthen or enhance areas of the reserve in collaboration with skilled partners, and a dedicated team of volunteers and supporters. They also provide education and engagement in the form of family events, guided walks and talks, all-age photography competitions, and supporting school and scouting visits.

Annual butterfly surveys are conducted as part of the UK Butterfly Monitoring Scheme, and encourage members of the public to take part in citizen science projects, such as BioBlitz.

The Friends would be delighted to have you mark the occasion with them on June 7 from 1-4.30pm.

The programme includes: 1-2pm, minibeast hunt with Ray Barnett, suitable for children aged five and above with adults; 2.15-3.15pm, The Wonder of Trees, with Sue and Alistair Rankine, suitable for children seven and above with adults; 3.30-4.30pm, The Plants of Old Sneed Park, with Rupert Higgins and Dawn Lawrence, all ages.

Places on the talks are free, but limited. Please email: outreach.ospnr@gmail.com to reserve your spot.

New members are also always welcome, to join the Friends and/or help at working parties.

For more details on both, please see: <https://www.oldsneedparknaturereserve.org/>

COMMUNITY FUND

IT STARTED WITH A WARM MEAL

EASTSIDE COMMUNITY TRUST, EASTON
BRISTOL CLIMATE & NATURE PARTNERSHIP

Start something great with our environmental funding.
tncommunityfund.org.uk/it-started



Redland Sofas & Curtains

Curtains & Upholstery



**15% OFF
REUPHOLSTERY
IN JUNE**

- curtains
- roman blinds
- sofas & chairs

- reupholstery
- footstools & ottomans
- headboards

- designer fabrics
- interior design
- styling

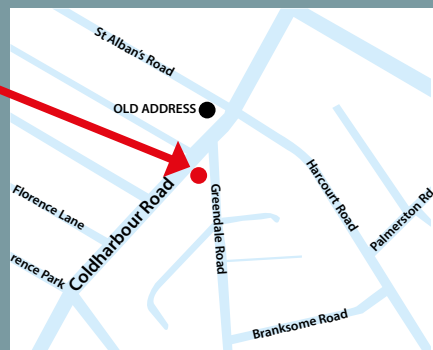
Visit our studio shop

Address: 110 Coldharbour Road, Redland, Bristol BS6 7SB

Email: info@redlandsofasandcurtains.co.uk

Phone: 0117 924 8383

www.redlandsofasandcurtains.co.uk





the place
for you...

Chack Lane, Westbury on Trym, BS9 — for sale with Ocean Westbury on Trym

We sell all kinds of homes, for all kinds of people – and look after them every step of the way.



oceanhome.co.uk



Scan to get an instant valuation for your property.



ocean
estate agents

NEWS

New group opens after WI is shut

A NEW era has begun in Westbury on Trym with the formation of a Women's Association to replace the Women's Institute branch.

The new group held its first monthly meeting on May 18 and intends to continue its programme of speakers, and extra activities of crafts, lunch club, skittles, book club, coffee mornings and pub evenings, as an independent organisation.

The decision to disband the WI branch after 33 years came after a ruling by the national organisation that membership should be restricted to biological women. This was following the UK Supreme Court's judgement that the legal definition of a woman is based on their sex at birth, meaning that transgender women can no longer be WI members.

Frances Riley, who was president of Westbury on Trym WI, said every WI member

across the country had been required to sign a form declaring they had been born female. The eight committee members at Westbury all refused to sign – and all but four of the remaining branch members made the same decision.

This led to the Avon Federation of WIs attending a meeting in April at which the 46 members voted overwhelmingly to suspend the Westbury branch for three years.

"We are sad about it," said Frances. "Many of our members have been in the WI for decades. But we felt that by signing the forms we would be colluding with discrimination and contributing to an erosion of rights that have been hard-won. The WI nationally did not explain why they felt this action was necessary."

She explained that the branch did not have any transgender members, although they would

be welcome as the group, whose members are aged 59 to 96, was determined it would continue to be inclusive.

Another Avon branch, in Longwell Green, has also closed this spring because of the WI's change of policy to ban transgender women "exacerbated by the manner in which this was handled without engagement or consultation with the grass roots members". It too is forming an independent group.

The National Federation of Women's Institutes, which has had transgender members for 40 years, said it had had to make the decision to ban them from April to protect its status as a single-sex charity and avoid the risk of costly legal action.

It intends to set up a network of WI Sisterhood groups, "where all women can come together to learn, share ideas, and work together to improve lives in our communities".

Currying favour

WE all love a good curry, and those of us living in or near North Bristol, are spoilt for choice for award-winning fare, following a clutch of recent awards for our local curry houses.

At a ceremony last month at the Crowne Plaza in Reading, Oceanic Awards announced the winners of the 1st Southern Curry Awards 2026.

Adding further certificates to their collection, Indian Kitchen, Salkaara, Naan & Co, and Urban Tandoor all received a multitude of awards in recognition of their outstanding food and service, with Salkaara being granted the title of Overall Winner in the Best Curry Experience of the Year category.

In further success for the industry, Cotham Hill-based Achari Indian Kitchen has been named in the top 100 Asian Restaurants for 2026 at an official event at the House of Lords.

G25 INSTALLER OF THE YEAR!

WINNERS!

G25
AWARDS
WINNER



THE WINDOW HUB.CO.UK

Upgrade your
windows & doors
with the
UK's #1
installer!

Get in-touch today for a FREE
no obligation quotation

📞 08000 219 319

Come visit our showrooms

📍 72-74 High Street, Bristol BS16 5HN

📍 208 Topsham Rd, Exeter EX2 6AA

✉ info@thewindowhub.co.uk 🔍 www.thewindowhub.co.uk



FROM BRISTOL NORTH WEST'S MP

An increasingly dangerous world

On ANZAC Day, April 25, a service in Westminster Abbey commemorated the allied forces who died in the Gallipoli landings of Ottoman Turkey in the First World War, including 29,000 British and Irish soldiers and 11,000 Australian and New Zealand Army Corps (ANZACs).

This act of remembrance is especially poignant today, as we find ourselves once again living in an increasingly dangerous world.

To counter this threat, the long-standing defence and security ties between the UK and our allies are being strengthened as we work together on a trilateral security partnership between Australia, the UK and the US – known as the 'AUKUS' defence partnership.

During a ministerial visit to Australia in April, I was invited to tour a classified facility where Brits will help to build a new generation of nuclear-powered submarines. These will be the largest, quietest and most advanced

attack submarines ever operated by the British Royal Navy and the Royal Australian Navy – helping to keep both of our nations safe for decades to come. In return, the Australians are investing over £2 billion here in the UK.

It's the first priority of this government to defend the British people and our interests, so it is important that we are strengthening our submarine fleet. But diplomacy will always be our strongest weapon.

The current conflict in the Middle East is not our war, but our armed forces have taken the necessary defensive actions to protect the around 300,000 British civilians in the Gulf region and to protect our allies.

The Iranian regime's response to the joint US and Israeli airstrikes had become a threat to our partners, to our interests, and to our allies. What we had seen was a sustained, reckless campaign of strikes from the Iranian regime – with ballistic missiles targeting

Gulf allies who were not involved in the original strikes.

That's why this government not only stepped up our defensive capability across the region but also gave the US permission to use bases where we have long-standing arrangements with them, for the specific defensive purpose of destroying the missiles that were targeting Gulf allies and posing a risk to British nationals in the region.

Many of you will also be concerned about how the closure of the Strait of Hormuz might impact the cost of living. That's why I announced in the House of Commons that I'm chairing a new contingency planning ministerial group. This will focus on preparing for and mitigating, where possible, any impact on our economy and domestic security caused by the conflict.

And finally, in other news, the actor and broadcaster Sir Tony Robinson will be joining me for an event in Filton at 2pm on June



Darren Jones
writes for
the Voice

6 to discuss philanthropy, charity and the importance of giving back. To book, head to darren-jones.co.uk/events.

• As always, if you need my help or have a question, you can get in touch with me at darren.jones.mp@parliament.uk, by calling my office on 0117 959 6545 or by writing to me at the House of Commons, London SW1A 0AA.

Complete your makeover with £600 OFF FLOORING

Available from April 1st to June 30th 2026.



DREAM DOORS[®]
NEW LIFE FOR OLD KITCHENS

- Up to 50% less than a new fully fitted kitchen
- Replacement kitchen doors
- Cost effective made to measure solution
- Quick installation in 2-3 days by local professionals

Checkatrade.com 9.7/10
Where reputation matters

11-12 The Promenade,
Gloucester Road,
Bristol, BS7 8AL

Call us now for a free estimate:

01179 443 223



MODERN

CLASSIC

TRADITIONAL

CONTEMPORARY

Terms and Conditions apply. Offer only applies to selected flooring. Participating showrooms only.

DREAMDOORS.CO.UK

THE UK'S #1 KITCHEN MAKEOVER COMPANY

■ ADVERTISING FEATURE

The importance of source of funds and wealth in conveyancing transactions

Why do we request information on your source of funds and wealth?

Property transactions are attractive to those wishing to carry out criminal activity, due to the significant sum of money which changes hands. As a result of these risks, the Solicitors Regulation Authority (SRA) identified conveyancing as one of the highest risk legal services provided. Therefore, solicitors are required to act with caution when assessing source of funds and wealth in order to prevent criminal activity, such as money laundering. This often means that we are required to request information, and ask questions which may appear to be 'intrusive' to fulfil our professional obligations. However, this in turn helps safeguard a buyer's interest in a property, as if money that is associated with criminal activity has been used to purchase a property, the property may be seized by the

authorities.

What is the difference between source of funds and source of wealth?

Source of funds refers to the money which is being used to fund a transaction. Unfortunately, it is not sufficient to only provide a bank statement which shows the funds are held in your account. Instead, we need to understand and evidence how the funds in your account have accrued. For example, if your money has accrued by saving your income, we will require evidence of payslips and bank statements to show the amount you earn each month, and the amount you are saving each month. Thereby, making it easier to ascertain whether the transaction at hand is consistent with your lifestyle.

We also need to ensure that the source of funds evidence provided is consistent with your source of

wealth. Source of wealth refers to the origin of an individual's entire assets. For example, an individual may have accumulated their wealth from investments, employment income and inheritance. This helps us to build the picture on how you have legitimately accumulated your funds.

Although we appreciate that you may have already been required to provide information to your mortgage broker, or estate agent, we are reviewing the information from a different perspective, and may require more in depth information to satisfy our requirements. The earlier on you are able to provide information to your solicitor to satisfy these requirements, will aid for smoother transactions, and prevent delays. Therefore, it is important to work with your solicitor to provide the information they are requesting.

What can a buyer do to prepare



for source of funds and wealth checks?

It is really helpful for buyers to provide clear explanations of where the funds are currently held (along with documentary evidence such as bank statements), and documents showing how these funds have accrued (such as a copy of a completion statement for the sale of a previous property). The clearer the explanation provided, the swifter these source of funds checks will be completed.

Please note that your solicitor will likely require full bank statements rather than screenshots. Therefore, if these need to be requested with the bank, it is important to do this as early on as possible.



Offices in:

Henleaze | Whiteladies Road
Clifton Village | Shirehampton

0117 962 1205 | www.amdsolicitors.com



PRIVATE CLIENT - FAMILY - PROPERTY - COMMERCIAL

To advertise, contact Emma on 0117 908 2121 Or 07715 770448. Email: sales@henleazeandwestburyvoice.co.uk

LEESE & GORDON

INDEPENDENT ESTATE AGENTS



Stoke Bishop

Guide Price £1,125,000

Beautifully extended and thoughtfully updated 4-bedroom detached family home. Benefits from 4 bedrooms and 4 bathrooms, (including en-suite facilities), off-street parking for multiple vehicles, and a stunning rear garden. EPC C



Westbury on Trym

Guide Price £995,000

Beautifully presented 5-bedroom semi-detached family home. Stylish, contemporary living throughout with open-plan kitchen/dining space, boasts an ensuite, family bathroom & an additional shower room. Further benefits include off-street parking, store, and a well-maintained rear garden. No onward chain EPC D



Cliftonwood

Guide Price £500,000

Victorian two-bedroom mid terraced house full of period detail and charm. Set in an elevated position on the Cliftonwood slopes within walking distance of Clifton village, Clifton triangle, Harbourside and the City Centre. No onward chain. EPC D



Stoke Bishop

Guide Price £500,000

A 4-bedroom mid-century modern leasehold terraced house offered with no onward chain. Of striking design, this property offers excellent potential to make it your own, with generous living space. Front and rear gardens, a garage, and access to a range of additional resident facilities. EPC E

LEESE & GORDON

125 Stoke Lane, Westbury on Trym, Bristol BS9 3RW
Tel: 0117 9622299 | www.leeseandgordon.co.uk



COMMUNITY NEWS

Film puts 'national emergency' in spotlight

IT'S an old joke, "Everybody complains about the weather, but nobody ever does anything about it."

But with extreme climate events, fires and floods around the globe, it isn't a joke any longer, and maybe it is possible to get something done. That was the aim of an event in London's Westminster Hall last November. An audience of more than a thousand politicians and leaders from business, culture, faith, sport, and the media was invited to be briefed by ten leading experts.

They were told, and shown, how bad climate change is already and how much worse it could be if action is not taken. There was also a message of hope: there is clear evidence that urgent action will strengthen our economy, resilience, and quality of life.

The next step is taking that message to the public. A nationwide grassroots movement is organising screenings of a condensed version, the People's Emergency Briefing: 50 hard-hitting minutes of facts and astounded discussion. To be shown in **Henleaze, Bradbury Hall, Waterford Road, BS9 4BT on 14 June, 19.30-21.30.**

The purpose of the film is to raise awareness, provoke discussion, and to increase



Where will the next storm strike?

pressure on Parliament to have the film shown on national television.

"Everybody needs to know what might happen, what certainly will happen if we don't act, and our leaders need to know that we want action," said the spokesperson of the Westbury Park Community Association, which

is organising the showing in Henleaze.

"Politicians assume that people don't care. We have to show that they do."

In light of the risks now clearly established by independent experts, the National Emergency Briefing calls for Government action to inform the public, prepare us and protect us.

It says:

- The Government must deliver a prime-time, multi-channel national emergency briefing, launching a major public plan to cut disinformation. Plain-speaking experts in the original Briefing showed how this can be done.
- The Government should launch a science-led national emergency response to climate and nature breakdown, showing the same leadership and determination as in WW2 and during the financial crisis. There must be emergency legislation driving rapid reduction in emissions and increased investment in adaptation. Such action will create jobs and improve lives.

International climate conferences failed to deliver the scale of global action needed. The UK can establish the credibility required to lead by example in driving the coordinated global action we need.

HENLEAZE OPEN GARDENS

THE Henleaze Society is hosting an Open Gardens Day on Sunday 14 June (1.30pm to 5.30pm). Nine gardens in the Henleaze area will be open - free of charge - to Society members.

Some garden hosts will be collecting for their favourite charities and providing refreshments, in addition to selling plants.

Chair of the Trustees Helen Furber said: "This year we are welcoming three new garden hosts. We anticipate this being an enjoyable community event with many people taking advantage of some excellent refreshments, in addition to purchasing plants.

"We hope that current and new members will enjoy the event - whether they choose to visit one or all of the gardens."

Annual membership of The Henleaze Society, covering everyone in your household, is £5 (or £7.50 including postage if outside the Henleaze area). Benefits include quarterly hard copy Newsletters, regular electronic updates about Henleaze and invitations to events such as the Open Gardens Day.

Further information about The Henleaze Society is available at <https://www.henleazesociety.co.uk> To join the Society and request free of charge admission to the Open Gardens event, send an email to thnewsletter@gmail.com.

LOCKLEAZE CLIMATE & NATURE FESTIVAL

THE Hub and Gainsborough Square in Lockleaze will play host on Saturday June 6 to the Lockleaze Climate & Nature Festival.

From 1.30-5pm, the area will come alive for an afternoon of fun and celebration featuring reggae DJ K Anthony, Unfold Community Arts, Lockleaze Youth Climate Group, Ceilidh dancing, community picnic and stalls including Horfield Greenery, Avon Wildlife Trust, Coo Geller, Street Goat, and much more.

Children's activities, including a fancy dress competition and a flower power bee parade, will keep the little ones entertained.

Save the date - and if you could contribute an hour to making it happen, please contact reallywild@lockleazent.co.uk

**Climate chaos:
the risks we face
and what we can do.
A film that explains it**



**People's
Emergency
Briefing**

**Bristol,
Henleaze**



Film screening and discussion

Bradbury Hall, Waterford Road, BS94BT
14 June, 19:30 to 21:30

www.nebriefing.org

FROM YOUR COUNCILLORS

Southmead: Kaz Self and Kye Dudd (Labour)

Renters Rights Act

The Renters Rights Act came into effect on 1st May. It introduces significant reforms to enhance tenant protections, abolish no fault evictions, ban bidding wars, and create more stable rental agreements in England. Landlords are limited to raising rent only once a year and tenants have the right to challenge any rent increases they believe are unfair.

Crime and anti-social behaviour

We recently met with Darren Jones MP and the Police and Crime Commissioner Clare Moody to discuss crime and anti-social behaviour, particularly in the Arnside area of Southmead. We've asked for more visible policing and for the CCTV cameras to be properly monitored.

Nighttime economy

The local nighttime economy describes a number of sectors, including retail, logistics, manufacturing, transport, health and care, hospitality, culture and leisure which operate between 6pm and 6am. It is estimated that across the range of sectors, approximately 40% of work undertaken in Bristol is during these hours, demonstrating its significance. The previous administration appointed a Nighttime Economy Adviser and a Bristol Nights Partnership was created. This resulted in the Bristol Rules campaign (Autumn 2021), the Women's Safety Charter (2022) and Bristol



becoming the UK's first city to adopt a harm reduction drug and alcohol policy (2022). In addition, anti-harassment training and guidance and training for tackling drink spiking was provided.

The Green-led administration wanted to scrap this role. In a meeting called by Labour councillors on 8th May this decision was reversed.

Southmead pub refurbished

The Union Arms pub (formerly known as the Treble Chance) is to re-open on June 5 after a significant refurbishment. They will have TV screens showing sport, so a good place to

watch some of the FIFA world cup games this month.

Road maintenance

The wet winter resulted in a significant number of potholes appearing on our local roads. These can result in damage to tyres and suspension on vehicles and are dangerous for 2-wheeled road users.

We were pleased to get some of the potholes on Southmead Road repaired, alongside the repainting of white lines and the zebra crossings at the junction with Wellington Hill West. Please report any issues with roads and pavements using the online tool fixmystreet.bristol.gov.uk

A number of roads in our area will have a surface dressing treatment. This is a cost-effective way for the council to prolong the life of roads across the city by preventing damage from water and UV sunlight. It can extend the life of a road by 10 to 15 years, ensuring safer and smoother journeys for all road users.

The council is spending £2 million to help protect and extend the life of 159 roads across Bristol.

Kye & Kaz

cllr.kye.dudd@bristol.gov.uk 07795 509 531
cllr.kaz.self@bristol.gov.uk 07386 698 716.

Need legal advice?

WARDS
SOLICITORS

We offer expert legal services for you, your family and your business

Get in touch 0117 428 1999.

51 Henleaze Road, Henleaze, Bristol, BS9 4JU

wards.uk.com

Offices in: Bradley Stoke | Central Bristol | Clevedon | Clifton | Henleaze | Keynsham | Nailsea
Portishead | Staple Hill | Thornbury | Weston-super-Mare | Worle | Yate

FROM YOUR COUNCILLORS

W-o-T & Henleaze: Stephen Williams, Caroline Gooch, Nicholas Coombes

Proposals for St Christophers Site

The new owners of the former St Christopher's school site in Westbury Park have presented their proposals in a public consultation. The former special school, fronting Westbury Park Road was bought by Square Bay in March this year, with Acorn Property Group as their preferred developers.

The initial plan (at the pre-application stage at present), is to convert the listed 1960s Grace House to flats, while the Victorian villas facing Westbury Park would be a mixture of apartments and large single-family homes. Within the school grounds, the developers propose to add a mixture of semi-detached and terraced houses. The draft plans are shown on their website www.stchristophersredevelopment.co.uk, and were presented at an exhibition at St Albans Church on May 7.

We understand that the online feedback form remains open for public comment, and a further exhibition will take place in the summer. We encourage residents interested in the proposals to engage with these consultations and thank the many individuals and community groups who have already done so.

20mph consultation

The Council has recently completed a consultation on lowering the speed limit on all roads in Westbury on Trym and Henleaze to 20 mph (except Passage Road). Your local councillors support the majority of these changes, which will make roads where people live safer and more pleasant. However, we have objected to the inclusion of the A4018 (Falcondale Road and Westbury Road) as this is a through route for traffic. The final decision will be taken by the Transport Committee, on which Nicholas sits, which will consider the results of the public consultation.

Downs injunction

A judge has approved a possession order for the highways around the Downs. This has enabled the council to demand that vehicle dwellers move away. The judge has granted a separate injunction that will prevent anyone returning to the area. The Council sought the order following escalating anti-social behaviour associated with the vans and caravans that have been parked on the Downs for many



years. At the same time, Bristol City Council are providing advice and sourcing alternative sites for people affected.

As local councillors we have been working to achieve this combined approach, with both support and enforcement, to make interventions sustainable. The vast majority of vehicle dwellers have now moved away, but at the time of writing several abandoned or unroad-worthy vehicles need to be removed. While there is still work to do, it is clear that the plan is working.

Library strategy consultation

Bristol Council's Library Service are consulting residents on the future of libraries in the city. Stephen has already secured funding for the library service, so this consultation is not about cuts. Instead, it is about how people want to use our libraries in the future, including those who currently don't. Please do feed in your views, in particular whether you would like to reshape the opening hours for more early evening openings and possibly Sunday openings. The consultation is live until 22 June at bristol.gov.uk/librarystrategy

Roads and pavements

We continue to press for repairs to roads and pavements where necessary. Caroline has managed to get the roundabout at the junction of Henleaze Rd and Northumbria Drive on the work schedule for repainting. We also regularly hear about pavements being blocked by over-

hanging bushes. It is the householder's responsibility to keep their own bushes clear of public footpaths and the highway. If this isn't done the council can do the cutting back and send the householder an invoice. Please do check that your own bushes don't encroach over pavements, and bear in mind that overhanging branches can cause problems for people with visual impairments.

Neighbourhood Fora

We were happy to take part in the Westbury on Trym Neighbourhood Forum at the library on April 21. Discussions with residents covered a range of issues. We are still waiting for the council transport department to finalise the legal papers for Westbury Hill car park charges. The council is not ready yet to begin consulting our ward about the potential introduction of resident priority parking areas. The delay is frustrating all round.

The applicant for Carlton Court shopping centre has been asked for a parking impact assessment, including the nearby roads. Your councillors and the Westbury on Trym Society are backing a bid for Community Infrastructure Levy funds to be made available for a zebra crossing at the village end of Stoke Lane, completing the circuit of crossings around the war memorial island. Questions were also asked about the council's debt collection record, Stephen has asked council finance officers for a briefing and will update the next meeting. He has also arranged for the large amount of graffiti on the former Barclays building to be removed. Stephen also explained how the government's devolution of some new powers to regional authorities affects Bristol, for instance the power to charge a visitor levy for tourists and businesses staying in Bristol hotels.

Residents in Henleaze are invited to join us at the Trinity-Henleaze URC on Waterford Road from 7pm on Monday 8 June for the Henleaze Neighbourhood Forum.

Contact us

cll.nicholas.coombes@bristol.gov.uk
07386 698 750

cll.caroline.gooch@bristol.gov.uk 07386 698 669

cll.stephen.williams@bristol.gov.uk
07386 698 772



www.fullservicecleaning.co.uk
01173 215 815 | 07572 412 600

We pride ourselves on being professional, with excellent customer service, fully insured and competitively priced.

- Regular domestic & commercial cleaning
- Short stay Airbnb management & cleaning
- End of tenancy cleaning, one-off deep cleans, carpet cleaning, communal area cleaning
- All cleaning products supplied and included in price

NO FEES OR CONTRACTS!



Driving
Miss Daisy®
We're There For You

**COMPANION AND
DRIVING SERVICE**

Now taking bookings in your area!

- For people unable to drive but wish to remain independent
- Supported trips to the doctor, hospital, shops, hairdresser...
- Social outings, holidays, help at home & much, much more
- DBS checked, First-Aid trained & Dementia friendly
- Wheelchair Accessible & Fully Licensed Vehicle

To book your Daisy:

07951 079 558 / 0333 014 6211

northbristol@drivingmissdaisy.co.uk / www.drivingmissdaisy.co.uk

■ BOOK REVIEW

The Wax Child

DURING the years 1617 to 1625 a witch was burned every five days in Denmark.

The Wax Child is a novel based on an series of Danish witch trials that took place during this period. Our narrator is an child shaped in beeswax.

The wax doll was borne by its creator, Christenze Krukow, a Danish noblewoman, for forty weeks under her right arm as if was a proper child. The wax child sees everything in the past, present and future. It sees the Viking ships that journeyed far across the sea to lay claim to territory, it sees the ships of the Danish East India Company filled with slaves in the darkness of their holds and observes the rising of realms, the founding of states, the creation of steam locomotives and the splitting of the atom.

The narrative is interspersed

with spells taken from so called black books, dating from 1400 to 1900. The novel beautifully evokes the friendship and sisterhood of women, struggling to survive in an misogynistic world. They bond over the plucking of geese, the picking of hops, the daubing of walls and the nursing and rearing of children.

Christenze and her friends Maren, Dorte, Apelone, Mette, Elle, Else, Bodil & Sidsel meet up on the twelfth of December 1620, to laugh, dance and to weave magical spells. Their evening of revelry is rudely interrupted by a local fisherman Peder Fisker, who accuses them of witchcraft and reports them to the local magistrate who is determined to silence them once and for all.

This is an evocative and beautifully written novel

By Olga Ravn

illustrating the power and brutality of men who resorted to hearsay and torture whenever their lives were threatened by strong and independent woman. The language is physical and visceral, allowing the reader to smell and taste the blood and guts of these violent and turbulent times.

Visit your local library where you can enjoy this engaging novel which was longlisted for the International Booker Prize. Review by Bob Deacon, from Bishopston Library



OPENING HOURS: WoT

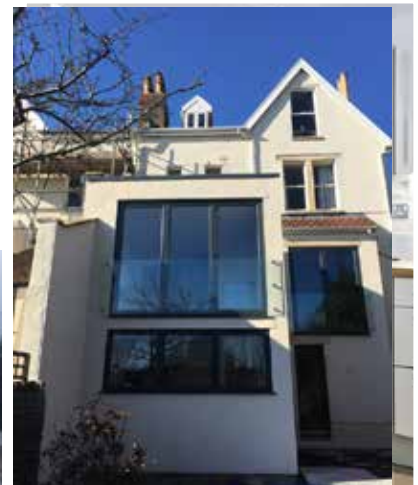
Monday	(2pm-7pm)
Tuesday	(11am-4pm)
Wednesday	(11am-4pm)
Thursday	(11am-4pm)
Friday	(11am-4pm)
Saturday	(11am-4pm)
Sunday	(closed)

OPENING HOURS: HENLEAZE

Monday	(11am-5pm)
Tuesday	(11am-5pm)
Wednesday	(1pm-7pm)
Thursday	(11am-5pm)
Friday	(1pm-7pm)
Saturday	(10am-5pm)
Sunday	(closed)



Expand is a Bristol based building company delivering high quality construction and high standard workmanship with a customer focus.



Find out more

www.expandbuilding.co.uk

 0117 959 1777

We specialise in EXTENSIONS

 07813 328 387 |  07972 577 827 | email: info@expandbuilding.co.uk

Expand Building, 124 Falcondale Road, Westbury on Trym, Bristol BS9 3JD | Company Registration No. 7933161

NEWS

Vans action welcomed

THE long-running dispute over caravans and van dwellers on The Downs has entered a new phase following legal action by Bristol City Council.

As reported in May's Voice, Bristol City Council secured a possession order at Bristol County Court, giving it legal powers to remove lived-in vehicles from roads surrounding The Downs if residents failed to leave voluntarily. The order covered key roads around the area, including Circular Road, Stoke Road and Saville Road.

The council said the action was necessary because conditions linked to the encampments had become a public health hazard, citing concerns over sanitation, waste accumulation and environmental impacts on the surrounding area.

The council was later also granted an expanded injunction until May 2027, allowing it to act more quickly against new encampments and preventing removed vehicles from returning. The original injunction covered

only the grassed areas of the Downs, but it has been extended to include surrounding roads.

The council's action followed months of campaigning by residents' group Protect the Downs.

Sharon Scott, vice chair of Protect The Downs, welcomed the moves, saying: "This is a positive move for the people of Bristol who use The Downs."

"Bristol City Council have woken up and realised that our green spaces must be protected. They are now able to focus on the truly vulnerable who need help and they can direct them to the support they need as well as meanwhile sites."

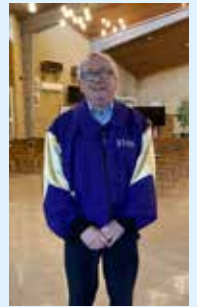
Tony Nelson, chair of Protect The Downs, also hailed the action. He said the group, who are all volunteers, had worked tirelessly to keep pressure on the council.

He said the legal rulings marked "an important step in restoring and protecting one of Bristol's most treasured public spaces for everyone to enjoy."

Tony's purple patch

TONY Hall, 81, who founded Bristol Dementia Action Alliance (BDAA) 13 years ago, set himself the challenge of walking a mile for every year along the 13-mile route of the Bath to Bristol railway path for Dementia Action Week 2026.

On May 16, Tony had his hair dyed with BDAA purple to make sure he stood out on his walk. Student Ellie, who has been volunteering at BDAA's Happy Days Cafe in Westbury, created an amazing purple jacket, pictured, as part of her GCSE project – which Tony wore on the day, Tony founded BDAA in 2013 as his personal response after his wife Barbara was diagnosed with dementia. She lived with frontotemporal dementia for more than 20 years before dying in 2022. Tony continues to lead the charity as founder and chair.



The walk set off at 9.30am from Brassmill Lane at the start of the cycleway and footpath and followed the railway path to Bristol. Walkers reached Bitton Station at around 12pm for a lunch stop in 'Rose', the second buffet car, where BDAA also had an information stall.

The group set off again at 2pm, stopping briefly at Warmley Station café around 2.30pm before continuing into Bristol and arriving at the arch in Lawrence Hill Park at end of the cycle path around 6pm.

The walk was part of a wider programme of activities marking Dementia Action Week.

On May 18, BDAA hosted a Happy Days memory café at Ambition House, Lawrence Weston, where long-time supporter Teresa had her head shaved, after raising more than £1,000 for the charity.

Donations for the above events or to the charity in general are always welcome via: <https://donorbox.org/bdaa>



Summer's Coming - Lets get you moving!

Recently, **ORKU** got out into the community at Henleaze Bowling Club, offering health checks and chatting all things movement. We even had a go ourselves...harder than it looks, but proof staying active comes in all shapes and forms.

Whether gardening is your exercise or you're tackling the unruly winter garden leftovers, it still puts a real demand on your body. Here are a few simple ways to protect it:

- **Break it up** - Avoid long stints in one position. Switch between kneeling, standing, and squatting every 10-15 minutes.
- **Hinge, don't hunch** - Bend through your hips and knees when lifting, not your lower back. Keep things close to your body.
- **Listen early** - Tightness and fatigue are warning signs, not something to push through. Short breaks now save bigger problems later.

Or if running is more your thing, we are currently offering **FREE RUNNERS HEALTH CHECKS**. They're a great way to understand how you move, pick up on any weak links, and keep those small niggles away. Call the clinic for more details!

50% off Consultation to all Henleaze & Westbury residents!
SCAN THE QR CODE BELOW -
ENTER DISCOUNT CODE
"VOICE50"



ORKU
CHIROPRACTIC HEALTH

0117 902 0039
hello@orkuhealth.co.uk
www.orkuhealth.co.uk
orkuhealth

NATURE WATCH

with Dawn Lawrence

How you can get a piece of swifts action

RESIDENTS in Egerton Road in Bishopston have installed swift boxes to help arrest the decline in these beautiful birds.

Swifts are very well-known, indeed they are exceptionally beloved – but they are in trouble. Nationally their numbers have dropped by around 68 per cent in 30 years (down by 90 per cent in the Bristol region) putting them on the Red List meaning they are of the highest conservation concern.

The good news is that we can help. It is not often that nest box schemes are a vital missing part of a bird's conservation needs but swifts are highly unusual in depending entirely upon us for their nest holes. Despite the widely acknowledged losses in insect populations, providing nest boxes is proven to increase the numbers of swifts. They are colonial birds, needing to nest in company with other swifts, and this means that the more boxes you put up the happier they are. Indeed, at the Swift House colony in Stoke Bishop, Mark Glanville has put up



A swift at the Swift House colony in Stoke Bishop Photo by Jane Glanville

25 boxes on his semi-detached house and last year 19 of them were occupied, resulting in 36 fledglings. This extraordinary success means that the Swift House colony has been the largest in Bristol for several years. You can follow the progress of these birds by going to www.bristolswifts.co.uk and also learn more about how you can help.

Swifts remain faithful to their nest site for their whole lives, unless it is blocked or removed (which can

lead to tragedy as the pair search desperately for their old hole and sometimes die in the attempt). The young birds return to their birthplace each year, getting to know the neighbourhood – whilst flying continually without landing for their first two years of life (really!) Then, at three years of age and old enough to breed, they seek a nest site in the vicinity.

Swifts are supremely adaptable: if the weather is poor in Britain, our

swifts have been known to fly as far as Finland, feed up on insects there for a few days, then return to their patient chicks, quietly sitting out the hungry interval. Their excitement at the parents' return can well be imagined – indeed at the Bristol Swifts website it can often be watched as most of the Swift House boxes have got webcams and the videos are regularly posted.

From now into August we can listen for the screaming cries of the swifts above us, we can admire their dashing silhouettes cutting ornate figures across the Bristol rooftops. What more can you ask than this wonderful entertainment? So why not get together with your neighbours and make a plan? You can go to the Bristol Swifts website and learn how to spot the best locations for swift boxes in your street and how to build the best types to fit your spaces – or where to buy them. And let's Save the Swifts together!

© Dawn Lawrence

A HOME FULL OF HEART, CARE, AND COMFORT



Field House
HORFIELD

Inhouse physiotherapy team

Continuous décor upgrades

Automated care plans

24/7 On-site nursing support

Adapted wheelchair car

Idyllic gardens & grounds

Amazing activities plan

Come And See Us



0117 969 0990

CQC rating

Good



Bristol Care Homes
Providing top quality, best value, holistic care

■ PHARMACY COLUMN

If you think your child has Impetigo, check symptoms with a pharmacist



0117 9246579
18 Kellaway Avenue,
Westbury Park, BS6 7XR

IT might start as a small sore, a patch of dry skin, or what looks like a minor graze around your child's nose or mouth.

But Impetigo can spread very quickly between young children — at home, in nurseries, schools, playgrounds, and sports clubs.

That's why the team at Kellaway Pharmacy is encouraging parents and carers to act early and get symptoms checked as soon as they notice them.

Early treatment can stop the infection from spreading to other children and family members.

What should you look out for?

Impetigo is a common bacterial skin infection that mainly affects young children.

Signs include:

- Red sores or small blisters
- Wet, crusty, or weeping patches

on the skin

- Honey-coloured or golden crusts
- Itchy or sore skin
- Patches that spread over several days

It often appears around the nose, mouth, hands, or on skin that has been scratched or irritated.

Why acting quickly matters

Impetigo is highly contagious and spreads easily through:

- Touching infected skin
- Scratching sores
- Sharing towels, bedding, toys, or clothing
- Close contact at nursery or school

What starts as one small patch can quickly spread across a child's body — and then to siblings, classmates, and other family members.

The earlier the treatment

starts, the easier it is to control the infection and reduce the risk of it spreading further.

Skip the GP wait

Many parents still don't realise they can go straight to their local pharmacy for NHS treatment.

Through the NHS Pharmacy First service, the trained prescribing pharmacists at Kellaway Pharmacy can assess and treat impetigo, where appropriate, with free NHS prescription-strength medication without needing a GP appointment first.

Parents, grandparents or other carers often visit after pick-up or getting a call from the nursery or school because the service is fast, convenient, and easy to access.

The service offers:

- Fast access to NHS care
- Free walk-in consultations

- Expert advice close to home NHS treatment, where appropriate
- Referral to a GP if further care is needed

If it looks like Impetigo, don't wait

If your child develops suspicious sores, crusting, or spreading patches, it's best to visit the team at Kellaway Pharmacy as soon as possible, rather than waiting for symptoms to worsen.

Getting treatment early could help stop the infection from spreading through your household, nursery, or school

Kellaway Pharmacy is here to help families with fast, accessible NHS care through the Pharmacy First service. No appointment is needed - just walk in. Call 0117 924 6579 to find out more or speak to the pharmacy team.

KIDS FEELING UNWELL?



KELLAWAY PHARMACY NOW OFFERS NHS-FUNDED TREATMENTS INCLUDING APPROPRIATE ANTIBIOTICS, SAVING YOU A GP APPOINTMENT!

WE CAN HELP WITH:

- **EARACHE** (1 YEAR & ABOVE)
- **INFECTED INSECT BITES** (1 YEAR & ABOVE)
- **SORE THROAT** (5 YEARS & ABOVE)
- **IMPETIGO** (1 YEAR & ABOVE)
- **BACTERIAL CONJUNCTIVITIS** (CHILDREN AGED 30 DAYS TO 2 YEARS)



VISIT YOUR PHARMACY FIRST

Find us at:

- 📍 Kellaway Pharmacy
18 Kellaway Avenue, Bristol BS6 7XR
- ☎ 0117 924 6579
- 🌐 www.pharmacyfirstbristol.com



Alpine LANDSCAPING

Established family firm with 25 years experience



- ★ Senior Citizens Special
- ★ Garden Clearance — Regular or one-off
- ★ Patios ★ Fencing ★ Tree Work ★ Turfing
- ★ Hedgecutting ★ Planting (Shrubs etc)
- ★ Organic manure delivered — Also applied
- ★ Professional and guaranteed work
- ★ Brick & Blocklaying

CALL JOE FOR A FREE QUOTE

Tel: 0117 959 2143

Mob: 07891 253 122

www.alpine-landscaping.co.uk

WHAT'S ON

JUNE EVENTS

■ **LA SCALA DELI** - The Italian Hub of Henleaze. Join us for one of our signature Wine Tastings led by our in-house sommelier:

June 11 & 19 - Emilia Romagna

June 12 & 18 - Dry Whites & Big Bubbles

July 16 & 24 - Meridiana - A producer exclusive

July 23 & 25 - Portuguese Tasting

Aug 6 & 14 - Meridiana - A producer exclusive

Aug 13 & 15 - Portuguese Tasting

SPECIAL EVENTS - Wine & Dine Dinner Party Tasting Menu - 5 courses, 6 paired wines:

June 27 - Calabria

July 18 - Emilia Romagna

August 8 - Emilia Romagna

Tickets at www.lascaladeli.com/tickets and in-store - more dates online

June 22

■ **HENLEAZE SENIOR FILM CLUB** 2pm. **Where the Crawdads Sing** (15). Based on the global best-selling book. Abandoned by her family, Kya Clark, otherwise known to the townspeople of Barkley Cove as the Marsh Girl, is mysterious and wild. When the town hotshot is found dead, and inexplicably linked to Kya, the Marsh Girl is the prime suspect in his murder case. Starring Daisy Edgar-Jones & Taylor John Smith. Carers welcome, easy access. St. Peter's Church Hall, The Drive, Henleaze BS9 4LD. For more information, please call 0117 435 0063

May 7 - June 18

■ **BEREAVEMENT JOURNEY**

COURSE: A 7 week course covering all aspects of bereavement and grief run by Holy Trinity Church, Westbury on Trym, suitable for anybody, of all faiths and none, who has suffered loss at any time. Dates: Thursday 7th May to 18th June from 7pm to 9pm each week. Contact the Parish Office 0117 9508644 email: office@westbury-parish-church.org.uk

July 10

■ **WESTBURY SINGERS PRESENTS 'SUN, SUN, SUN' OUR SUMMER 2026 CONCERT.** 7.30pm (doors 7.00pm). Westbury on Trym Village Hall, Eastfield Road, Bristol, BS9 4AG. Join us for a feast of sunney songs on a summer's evening in our lovely village hall. Adults £10 under 19s free. Tickets (incl. refreshments) are available from choir members: via www.westburysingers.org or on the door by card, Apple Pay, G Pay, Cash or Cheque. Enquiries: wotsingers@gmail.com. Contact Pete on 07885822121 for more details.

June 13 & July 18

■ **BLAISE COMMUNITY GARDEN** behind Blaise Museum, BS10 7QS. Open Monday, Wednesday and Saturday 10-2. Interesting walled kitchen garden, free entry, new volunteers needed & welcomed. Plants always available. Cash & cards accepted. Events: Café on 13th June 9.45-2pm, Henbury Flower Show 18th July 1-4.30pm and further Café on 25th July 9.45-2pm

June 17

■ **BRISTOL OPERA CLUB** invites you to a screening of Die Tote Stadt. The fabulous Jonas Kaufmann stars as a young widower trying to cope with the loss of his wife in the prodigious Erich Korngold's melodic and hauntingly beautiful opera. All are warmly welcomed in The Apostle Room, Clifton Cathedral, Worcester Road Entrance, 6.30 for 7.00. Entrance £8.00 (cash only please). Dedicated parking, Bar. Details: borkmail100@gmail.com 01275 848526

June 20

■ **BRISTOL BACH CHOIR**, All Saints Clifton, BS8 3ED, 7.30pm. A fascinating programme of secular music by Whitacre, Lauridsen. Tickets: from £15, students £1. www.bristolbach.org.uk 0117 214 0721

June 13

■ **WINDS OF CHANGE SUMMER CONCERT** is at Trinity Henleaze URC, Waterford Road, BS9 4BT on Saturday 13 June at 7:30pm. Winds Of Change

is one of the bands in the Bristol Concert Wind Band family. Tickets £6/U-18 free. www.bcwb.co.uk for advance purchase. An enjoyable evening for all the family.

June 24

■ **HENLEAZE CHORAL SOCIETY** will be performing their popular MIDSUMMER CONCERT and ARTISAN PUDDINGS tasting at 7.30pm in Holy Trinity URC. A plethora of music to include Sacred - Jazz - Opera- and songs from Loewe and Lerner's MY FAIR LADY. Tickets £18, students £9 to include Puddings, Programme and glass wine or mocktail. Available on the door or from www.henleazecs.org.uk Children go free.

July 4

■ **BLOWN AWAY! SUMMER CONCERT** is at Trinity Henleaze URC, Waterford Road, BS9 4BT on Saturday 4 July at 7:30pm. Blown Away! is one of the bands in the Bristol Concert Wind Band family. Tickets £6/U-18 free. www.bcwb.co.uk for advance purchase. An enjoyable evening for all the family.

MIXED ABILITY & POSTNATAL
PILATES
HORFIELD QUAKER MEETING HOUSE

MIXED ABILITY
PILATES
THURSDAY 9.15AM
FROM BEGINNER TO
INTERMEDIATE WITH
ADAPTIONS OFFERED

POSTNATAL
PILATES
(BABIES WELCOME)
THURSDAY 10.30AM
FOLLOWED BY TEA IN THE
GARDEN

Free taster passes available

www.pilateswithsylvia.com
pilateswithsylvia@gmail.com

July 10

■ **WESTBURY SINGERS** summer concert in the village hall. 7.30 pm (Doors at 7pm) Adult £10, under 19 free (Including refreshments) Tickets available from choir members or on the door by Card, Apple Pay, G Pay, Cash or Cheque. Or via our website www.westburysingers.org Enquiries: wotsingers@gmail.com

REGULAR EVENTS

Various days

■ **WESTBURY WILDLIFE PARK** The park's peaceful setting, with children's play area and cafe, is open for

you to enjoy with your friends and family from Fridays to Sundays from 10am to 4pm. Refer to the website wwpf.uk for events, activities and volunteering opportunities.

■ **WEST OF ENGLAND BRIDGE CLUB** meet at the RAFA Club, 38 Eastfield, Henleaze. Thursday afternoon is for improvers, and Monday and Friday afternoons, are for more capable players. These are EBU recognised sessions. You may come alone to any afternoon session or Wednesday evening when a partner will be found. The two evening sessions are Wednesdays and Fridays. For more information go to our website at www.woebridgeclub.co.uk or contact our Secretary Alan on 0117 4526947.

Monday

■ **PLAY BOWLS** at Canford Park in a friendly, social atmosphere. Qualified coaches and equipment provided. Contact: Les on 07305695579

■ **TEATIME CHURCH** - Children and families are welcome to join us once a month at the back of Holy Trinity Church in Westbury-on-Trym for crafts, games, stories and songs, followed by supper for all the children. There is also a baby/toddler area and a monthly Lego challenge. This is a very informal service, where children/adults can learn a little about God and the church in a fun and friendly environment. All are very welcome! Please visit our website for further information and monthly dates <https://www.westbury-parish-church.org.uk/teatime-church/>

■ **HENLEAZE SOCIAL GROUP 3 (U3A)** is a friendly and active group who arrange regular visits to coffeehouses, restaurants, pubs, and exhibitions. We also organise walks, treasure trails, and trips to places of interest, meeting every 3rd Monday at 11:00am in the coffee bar at Trinity Henleaze URC. New like minded members very welcome. Contact Jane Stott 07788 418078.

■ **CANFORD BOWLING CLUB** season has started again, and new members of any age or experience would be very welcome. Free coaching is available. If interested please email canfordbowlingclub@gmail.com or ring 07504254499. Come and give it a go.

■ **BRISTOL HOME LIBRARY SERVICE** - We are a free service for any adult who lives in Bristol and who can't get to their library but still wants books or audio books. Volunteers call monthly. Contact us if you would like

WHAT'S ON

to volunteer or know someone who needs us. BHLSVisits@royalvoluntaryservice.org.uk or 07714 898558

■ **WESTBURY SINGERS** - If you love singing and a varied repertoire, do try our friendly, non-auditioned, 4-part choir. We're especially keen to attract Tenors and Basses. We sing on Monday term-time evenings from 7:30pm - 9:30pm at Carey Hall, Westbury Baptist Church (far left entrance off the car park). Reading music is helpful but by no means essential. Simply come along one Monday evening (three free taster sessions available) and/or see www.westburysingers.org for more info and recordings, or email us on wotsingers@gmail.com.

■ ASSASSIN FITNESS CLASS

- Mondays 6:15pm, St Peter's Church Hall Henleaze. 45min Class £6. ASSASSIN is a Brand New Choreographed Combat style fitness class that allows you to let go of stress, whilst realising your inner SASS! It combines many elements of fitness including conditioning, cardio and plyometrics for a complete workout! Are you ready to become an Assassin? Aim, Shoot and Fire! Special September Offer - Your First Class is FREE!!! For more info and bookings please contact me: instructor.izyy@gmail.com or on Instagram @ [assassin_izyy](https://www.instagram.com/assassin_izyy)

■ **DICKENS SOCIETY.** 7pm, at Leonard Hall, Henleaze URC, Waterford Rd, Bristol BS9 4BT. Talks, costumed readings, book club and social events. New members welcome. See www.dickens-society.org.uk or phone Roma on 0117 9279875 for further details.

■ **WESTBURY ON TRYM WOMEN'S ASSOCIATION** meets on the third Monday of the month in the Westbury Village Hall, Eastfield Road, BS94AG, from 2.00 - 4.00 pm. We have interesting speakers, and extra activities of crafts, lunch club, skittles, book club, coffee mornings and pub evenings. Our lively, friendly and inclusive group welcomes visitors at any meeting. For more information call Sascha on 07961619806 or Liz on 07587170766.

■ **BRISTOL GOOD AFTERNOON CHOIR** rehearses at Westbury-on-Trym Methodist Church (BS9 3AA) 2-4pm (term time only). We are a fun and friendly, non-audition, community choir for both male and female voices - one of 32 Good Afternoon Choirs who 'sing in the afternoon' around the South West and further afield. New members are always welcome and,

whether you come alone or with a friend, we will be very pleased to meet you! For further details please visit our website - www.goodafternoonchoir.org - or contact us on 01761 472468 or via e-mail at gac@grenvillemusic.co.uk

Tuesday

■ **WESTBURY PARK WOMEN'S INSTITUTE** meets on the first Tuesday of every month in the Girl Guide Hut on Westmorland Road from 7.00 - 9.30pm. We are an active and friendly group with a varied programme plus extra sessions for craft, coffee, book clubs, walks etc. Visitors are always welcome and for more information do call Sue on 07813795936 or email westburyparkwi@gmail.com

■ PICKLEBALL AT WESTBURY

PARK TENNIS CLUB, Russell Grove. Pay and play Tuesday evenings 7-9pm. Details and booking on our website events page www.clubspark.lta.org.uk/WestburyPark-TennisClub Coaching also available.

■ **COMMUNITY SIGHT LOSS HUB,** First Tuesday of each month, 11am-1pm at Trinity Church, Henleaze. Join our coffee morning for blind and partially sighted people to socialise with others and receive advice and guidance from our experienced advisors. Tailored support also available by appointment by calling Sight Support West on 0117 322 4885.

■ **CARERS' SUPPORT GROUP** run by Bristol Dementia Action Alliance, held on the first Tuesday of each month, St Peter's Church, Henleaze, BS9 4LD, 2pm-4pm. A chance for carers to share stories and gain support from each other. For further information, contact Tony Hall, office@bdaa.org.uk

■ SCOTTISH DANCING TO KEEP

FIT AND HAVE FUN. Bristol Westbury Scottish Country Dance Club. Beginners taster package, (phone Tina: 07568 537154): £20 for 4 wks starting Sept. For new-to-us dancers, first night free, then £6pw. (Email: maggielkirkup@gmail.com). All classes are at St.Peter's Church Hall, Henleaze, Tuesdays 7.30 - 9.30 pm. Details at www.westburyscottish.org.uk. SC dancing also possible with RSCDS Bristol: see Thursday columns.

■ **WOMEN'S FELLOWSHIP** meet on Tuesday mornings at Westbury-on-Trym Methodist Church, 10.30am-noon. An interesting programme of speakers; come along to make friends.

For more details, ring Kate 07905 064720.

■ **BRISTOL HARMONY WEST GALLERY CHOIR AND BAND** sing and play lively church and village music from the 18th century. St Edyth's Church Hall, St Edyth's Road, Sea Mills, 7.30 pm on the 1st and 3rd Tuesday each month. All voices (SATB), string, wind and reed instruments welcome. No auditions but ability to read music helpful. www.bristolharmony.wordpress.com or call Fritjof 0117 924 3440. Contact before attending.

■ WESTBURY FOLK/COUNTRY

DANCING - come along to have some fun folk dancing on Tuesdays 1.30 - 3.30pm at Westbury College in College Road. All dances are called and refreshments are available. FFI contact Christine on 07775 628524 or codonnell100@btinternet.com.

■ **COMPANION VOICES BRISTOL** is recruiting new members. We meet in Easton on the 3rd Tuesday of the month from 7 to 9 pm to learn soothing and uplifting songs by ear and build skills in sensitivity/compassion/loving presence to sing at the bedside of people nearing the end of life. To join or support us in this work, contact Valerie on bristol@companionvoices.org. Visit www.facebook.com/CompanionVoicesBristol and www.companionvoices.org.

■ **BRISTOL A CAPPELLA:** Tuesdays 7.30pm, Victoria Methodist Church. Bristol A Cappella is an award-winning mixed barbershop chorus of around 30 members who love to sing close harmony a cappella. Our songs are mainly from pop music, with a bit of rock and some musicals. www.bristolacappella.co.uk/ Contact: membership@bristol-acappella.co.uk

Tuesday and Saturday

■ **BRISTOL HF RAMBLING CLUB** We are a friendly sociable club with a variety of walks. We have 2 Tuesday walks of either 8-9 miles or 5-6 miles. On Saturdays we have varying length walks including a hill walk eg Brecon Beacons once a month. If you would like more information please visit our website.

Tuesday, Wednesday & Thursday

■ **FRIENDLY BRIDGE SW** is a Bridge Club operating on Tuesday, Wednesday and Thursday mornings from 10am to 1pm at Stoke Bishop Village Hall. We also offer online bridge and face to face tuition. New faces are always welcome. Please email friendlybridgesw@gmail.com or call Gareth on 07921-788605 for further information.

Wednesday

■ **HENLEAZE CHORAL SOCIETY** meets at Henleaze Bowling Club, Grange Court Road, Wednesdays 7.30 to 9pm. A small, unauditioned choir singing varied music. New members welcome. For info, contact Kathy, 0117 949362 <http://www.henleazechoralsociety.org.uk/>

■ **GRIEF & BEREAVEMENT SUPPORT GROUP:** Meets on the third Wednesday of the month from 2.00pm - 4.00pm. In The Goronwy Room, St. Peter's Church, The Drive, Henleaze. BS9 4LD

■ A CLASS FOR EVERYBODY!

KEEP FIT, St Peter's Church, Henleaze, Wednesdays, 10-11am, £8. Improve your health and wellbeing with this low-impact exercise class. With music from the 60s to today's pop to enjoy a supple strength workout. Call Louisa: 07725 091429. Email Louisa: chairaerobicslouisa@gmail.com

■ WELCOME WEDNESDAY

Friendly and free coffee afternoon on the last Wednesday of the month, 2-3.30pm at The Beehive Pub, Wellington Hill West, BS9 4QY. Meet new people, have fun, and find out what's happening in your local area. Call 0117 435 0063 for more information.

■ A GENTLE WAY TO KEEP FIT & HAVE FUN! CHAIR AEROBICS,

St Peter's Church, Henleaze, Wednesdays, 11.15am-12.15pm, £8. Maintain and progress your strength, stability and balance at our seated and gentle standing exercise class. Songs from every era to enjoy and complement a workout for mind and body wellness. Call Louisa: 07725 091429. Email Louisa: chairaerobicslouisa@gmail.com

■ **HENLEAZE CHESS** From 2.45pm - 4.30pm on selected Wednesdays in Coffee #1 on Henleaze Rd for informal chess with your coffee and cake. Typically twice per month. All ages and abilities welcome. No membership or fee. Please join us if you spot us or contact us at markRthwaites@gmail.com for expected forthcoming dates.

WHAT'S ON

■ **GOLDEN HILL WI** Meets the first Wednesday of every month. 1-3pm. Golden Hill Sports Ground, Wimbledon Road, BS6 7YA. A vibrant, lively, afternoon WI in BS6. We have a varied programme to offer members. Visitors and new members will be given a warm welcome. For more information contact Pam Scull at goldenhillwi@gmail.com.

■ **TEA AND TOTS – GROUP FOR UNDER 5s.** Wednesdays during term time, 10-11:30am, Newman Hall building, W-o-T, BS9 4DR. Free onsite parking. Toys for all ages, sensory play, and craft. £2 suggested donation includes refreshments. Email toddlergroup.sacredheart@cliftondiocese.com Facebook: <https://www.facebook.com/profile.php?id=61579193183721>

■ **COME AND ENJOY** free tea and cake in a friendly atmosphere at Holy Trinity Church, Church Rd, Westbury-on-Trym every Wednesday 10.30-12. Call 0117 9508644 (mornings) for more information

■ **BRISTOL SCRABBLE CLUB** meets every Wednesday evening at 7pm until 10pm at Filton Community Centre, Elm Park, Filton BS34 7PS. New members welcome- first visit free so come along and give us a try. For further information contact Tania by email at tania lake@yahoo.co.uk

■ **HEALING** Spiritual Healing is available from 2pm to 3.30pm by the accredited healing team at Westbury Park Spiritualist Church, Cairns Road BS6 7TH. Just turn up or visit www.westburyparksc.org

■ **OPEN DEVELOPMENT CIRCLE** For those interested in developing their spiritual awareness and meditative ability. 7.15 for 7.30 start at Westbury Park Spiritualist Church, Cairns Road BS6 7TH. Just turn up or visit www.westburyparksc.org

■ **SWIFTS INCLUSIVE SPORTS** swimming sessions are for adults 18+ with any type of disability (hoist available) 7-8pm. £5 per session at Henbury Leisure Centre. Contact Karen Lloyd at 07734 335 878.

Thursday

■ **TRINITY HENLEAZE GUILD** meet fortnightly on Thursdays at 2pm in the Leonard Hall Trinity Henleaze URC Waterford Road. We have an interesting and varied programme of speakers and new members and visitors will have a warm welcome.

For more information contact Jenny on 01179620108

Thursday

■ **TODDLERS TOGETHER** is a parent and toddler group for the

community. It takes place every Thursday during term time from 10-11.15am at Westbury-on-Trym Methodist Church Hall, BS9 3AA. There are toddler toys, a baby area, a weekly craft activity, singing, drinks and biscuits and a final prayer to end the session. We ask for a £2 voluntary donation per family on the door. You can just turn up - no need to pre-book. To find out more about this group, visit <https://www.westbury-parish-church.org.uk/toddler-group/>

■ **EMMANUEL WESTBURY TODDLER GROUP.** A play group for children aged 0-4, their Parents & Grandparents. Every Thursday in term time, 10:15-11:45. Northcote Scout Hall, Great Bickeridge, BS9 3TY. £3 per family, payable on door. Includes homemade cakes, hot & cold drinks and all activities. Come along or look us up at <https://emmanuelbristol.org.uk/events/emmanuel-westbury-toddlers/> or enquire by email to avbradley@outlook.com

■ **LEARN TO MEDITATE.** Four weekly sessions starting September 11th. Thursdays 4-5 p.m. at The Well Centre for Spirituality, 38 Church Road, W-on-T, BS9 3EQ. Learn to change yourself and so change the world – opening our hearts to the inner source of our being. For more info or to register shelagh.layet@gmail.com or 07983 594182.

■ **FRIENDLY CLUB** meets every Thursday from 2 - 4pm in the Methodist Church Hall, W-O-T. We are a lively group of older people who meet to chat, play Scrabble or cards. Trips out and entertainments are arranged, plus we have tea and biscuits. Do come and make some new friends.

■ FRIENDS TOGETHER DEMENTIA FRIENDLY CAFÉ

A Dementia accessible café for all on the first Thursday of every month, 10am-12pm; The Randall Room at All Saints Church, Pembroke Rd, Clifton. Support, guidance, information and friendship with complimentary tea, coffee and homemade cake. No need to book – just come along and be a part of our community! For more information contact All Saints Parish Office: 0117 974 1355

■ **ARCHITECTURE & BUILDINGS GROUP U3A** meets at Henleaze United Reformed Church Meeting Room, Waterford Road, 2-4pm on the fourth Thursday of the month except July, August & December. We

are a small shared interest group. No previous knowledge required. Contact Rod for further information. Email: rodathey@gmail.com or call 07792 200949.

■ **HENLEAZE BOWLING CLUB** Thursday afternoon short mat bowls, 13.30, all welcome £3.00, tea and coffee provided. Located in Grange Court Road next to Newman Hall. Please see our website for information and all social events. <https://henleazebowlingclub.org.uk/social-events/>

■ **SCOTTISH COUNTRY DANCING** Join us for fun, fitness and friendship (singles welcome). First evening free! RSCDS Bristol. New/Inexperienced dancers 7-8.30pm (£4). Intermediate/Advanced dancers 7.30-10pm, (£6). St. Monica Trust, Oatley House Main Hall, BS9 3TN. www.rscdsbristol.info. Contact Ruth 0117 968 3057. SC dancing is also possible on Tuesdays with (Bristol) Westbury SDC: see Tuesday columns.

■ **WEST BRISTOL ORCHESTRA** is a small, friendly amateur group that enjoys music-making without public performances. It meets on Thursday nights in term time at St. Peter's Church, Henleaze at 7.15-9.15pm. We would especially welcome more string players. Please visit our website for further details at maths.bris.ac.uk

■ **HEALING FOR WELLBEING - NEW TIME 5.00 PM TO 6.15 PM** Feel more relaxed, peaceful, calmer. Drop in sessions (no need to book) with trained practitioners. Venue: Redland Meeting House, 126 Hampton Road, BS6 6JE. All welcome - donation basis. For more information, visit <http://www.facebook.com/BristolHealingGroup> or <https://www.thehealingtrust.org.uk/healing/healing-centre> or phone Selina 0117 9466434.

■ **HENLEAZE FLOWER CLUB** welcomes new members. Annual membership £52. Demonstration meetings on 2nd Thursday of the month, 2pm, Bradbury Hall Waterford Rd. Henleaze. Plus optional Practice Classes on 4th Thursday. We meet every month except December and August. Please contact Jenny York, Club Chair yorkjenny2@yahoo.com or phone/text 07880 700270

■ **SINGING TO REMEMBER** We meet on 1st, 3rd and 5th Thursday from 2 - 3.45 pm in The Bradbury Hall, Waterford Road, Henleaze. It is a friendly, supportive group for

people with dementia and their carers. Anyone interested can phone me 0117 9426095 to book a place or discuss.

■ HENLEAZE LADIES' CHOIR

Come and join us at St Peter's Church Hall. We are a friendly choir and meet on Thursday afternoons in term time from 1.45 to 3.45. There are no auditions, and the ability to read music is not necessary. Contact Jeanette on 9685409 or Jane on 07752 332278.

■ BRISTOL BACH CHOIR

are now recruiting new members. We are a friendly auditioned choir of between 30 and 40 singers. All voice parts are welcome. We rehearse on a Thursday evening at Bristol Grammar School from 7.30pm to 9.30pm. If interested please contact Julie at membership@bristolbach.org.uk

■ HENLEAZE FLOWER CLUB

Visitors are very welcome at any meeting £8. No need to book just come to The Bradbury Hall BS9 4BT on the second or fourth Thursday in the month, except August and December. Demonstrations on the second Thursday start at 2pm. Practice class on the fourth Thursday starts at 1.30pm. Contact Jenny York 07880 700 270

■ HIGHBURY BADMINTON CLUB:

Pete Stables 0117 950 1524 or www.pete4458.wixsite.com/highburybadminton Thurs 7:45pm mid September to End April, Westbury-on-Trym Village Hall

■ **FOLK NIGHT** every third Wednesday of the month at the Victoria inn Chock lane, Westbury on Trym. 7.30-10.30pm. All musicians and singers welcome or just pop in and listen. Call 0117 959 0834

Friday

■ BRISTOL SPANISH CIRCLE -

Come and meet a group of friendly people and enjoy talks in Spanish, musical events and social evenings. We meet every month from September to June, usually on the last Friday of the month, at St Peter's Church Hall in Henleaze. For info, see <https://www.spanishcirclebristol.com/>.

■ WESTBURY ON TRYM COUNTRY MARKET

10:00 - 11:30 every Friday in the Westbury on Trym Methodist Church Hall. A cooperative of local producers selling seasonal items including baked goods, preserves,

WHAT'S ON

local honey, eggs, cheese, ham, plants, flowers and hand made craft. It's free to come in and view. New producers, particularly cooks, are especially welcome. More information www.avoncountrymarket.co.uk, mail@avoncountrymarket.co.uk or call 0117 950 3897.

FOLK NIGHT every third Wednesday of the month at the Victoria inn Chock lane, Westbury on Trym. 7.30-10.30pm. All musicians and singers welcome or just pop in and listen. Call 0117 959 0834

Saturday
SEA MILLS REPAIR CAFE offers sewing, woodwork, general, electrical and cycle repairs at the

Methodist Church, Sea Mills Square, from 10am-12pm, every second Sat (except August). Voluntary service run by experienced repairers. Donations welcome. FFI see Facebook @ seamillsrepaircafe or email: repair-cafe.seamills@gmail.com

FAMILY ART WORKSHOPS at Goldfinch Create and Play, Canford Lane in Westbury-on-Trym. These take place on the first Saturday of every month from 10am – 11am and are designed for the whole family to enjoy together in a relaxed environment. Seasonal nature based crafts for older and younger attendees and fun, sensory trays for toddlers. Please visit <https://www.goldfinchcreateandplay.co.uk> to book your spot and

view our other offerings for toddlers, children, teens and adults.

Sunday
BRISTOL ORCHESTRAL PLAYERS are a friendly orchestra meeting monthly for workshop-style rehearsals. We enjoy exploring varied classical repertoire, from well-known symphonies to lesser-played orchestral works. Musical Director Nicola Ashton started with us in November. Join us on Sundays 6:30-9:00 in St Peter's Church Hall Henleaze. New members very welcome, particularly string and horn players. Contact joannamellors34@gmail.com or check our website <https://www.bristolorchestralplayers.co.uk/> for further information

SOUTHMEAD "SONGS OF PRAISE" - A COMMUNITY SING-ALONG Come for the music, stay for the friendship. The Community Church are delighted to sponsor a dementia friendly community event at the Greenway Centre, Doncaster Road, BS10 5PY, 0117 9503335. Join us every third Sunday of the month, 3pm-4.30pm, for an afternoon of singing well known hymns and favourite songs. Complementary refreshments and a boost to well-being available. For further details please contact: admin@thecomunitychurch.net.

HORFIELD ORGANIC COMMUNITY ORCHARD

The Horfield Organic Community Orchard (HOCO) calendar is shaped by three special public events. June is the month of midsummer, when days are longest and the sun is at its peak. Our summer open day feels like a calm oasis during this high energy season. The orchard is full of life - abuzz with insects and the eager creatures that feed on them. Millions of leaves are turning sunshine into sugars and cooling the air as they

breathe. Networks of mycelium snap, crackle and pop below ground. There is something soothing about sitting under the shade of a tree, or laying on the grass and tuning into communities of life on the ground. All are welcome to slow down, explore the life, and enjoy the lush beauty of our Summer Orchard Open Day on **Sunday June 14, 2-5pm**. We are delighted to be part of the Bristol Festival of Nature community-led programme.

Drop in for Art in the Orchard - bring your own art making materials. Be inspired by our Bee Active, Bee Fruitful! community pollinator project plantings, and find out more about the Ecology of Fruit Trees. Sign up in advance for the Summer Fruit Tree Care taster session (see website for details). Refresh yourself with homemade cake and fruity cordials. Plants and produce for sale - bring cash! More information: <https://community-orchard.org.uk/>

Looking for a solicitor? Keep it local.

Celebrating 10 years of Barcan+Kirby in 2025!

Barcan+Kirby is your local law firm in Bishopston, just 10 minutes from Henleaze and Westbury-on-Trym.

Our friendly legal experts provide practical, common sense advice for you, your family and your business.

If you're looking for help with any of the services here, get in touch.

- + Buying and Selling
- + Commercial Property
- + Corporate + Commercial
- + Court of Protection
- + Dispute Resolution
- + Divorce + Separation
- + Domestic Abuse
- + Employment
- + Family and Child Law
- + Inheritance Disputes
- + Medical Negligence
- + Personal Injury
- + Powers of Attorney
- + Wills, Trusts and Probate

You have our best – every time

Barcan+Kirby

▶ barcankirby.co.uk | 📞 0117 322 6602
BEDMINSTER | BISHOPSTON | BRISTOL CITY CENTRE | KINGSWOOD | THORNBURY
This firm is authorised and regulated by the Solicitors Regulation Authority. No. 568743.

ELM LEGAL SERVICES WE TAKE THE **DRAMA OUT OF MAKING A WILL.**

-  **Will Writing**
Meet with a local professional and receive full guidance and support.
-  **Family & Property Trusts**
Ensure your loved ones receive the maximum benefit by protecting your estate with trusts.
-  **Lasting Powers of Attorney**
Give someone the power to make decisions on your behalf, no matter what happens.
-  **Probate Services**
Our specialists help make a difficult time as stress-free and straightforward as possible.

Contact us today
0117 952 0698

feefo  
Platinum Trusted Service 2024 4.8 Star Rating



elm-online.co.uk
765 Fishponds Road, Bristol, BS16 3BS

■ VINEYARD NEWS with INGRID BATES

Exciting times at vineyard No2

AS some of you may know, we now have two growing sites; our original vineyard in Wrington which we have rented for around seventeen years, and a new site near Bath Soft Cheese in Kelston on the other side of Bristol.

The two vineyards are very different in appearance and are at very different stages of development. At the Wrington site, the vines are much more established with a mixture of 17 and 4-year old vines that crop really well. Whereas our new site is being planted as we speak! For the last few weeks we've been hand-planting small numbers of Regent and Seyval vines (the same as our Wrington site) to form the basis of what will eventually be a larger vineyard.

The process of hand planting is really enjoyable because the field has the most incredible views across the River Avon towards Saltford and Keynsham. We can even watch the Avon Valley steam train as it puffs its

way across the valley below! It feels like a very special place and is exciting to imagine how the vineyard will evolve over the coming years.

At our Wrington site, we ran our first vineyard tour of 2026 this month which was a great success. Thank you to everyone who came along. Details of upcoming summer tours at our Wrington vineyard can be found on our website. Once the new vines at Kelston become more established, we're hoping to open up opportunities for visitors there as well.

E: hello@dunleavyvineyards.co.uk

W: www.dunleavyvineyards.co.uk

Tiktok & Instagram: @dunleavyvineyards

Facebook@DYvineyards

Phone: 07779 085420



Some of the new vines at the Kelston vineyard

Continuity. Consistency. Time to talk.

Our easily-available appointments let you see your personal GP in the comfort of your own home.

Call 0117 427 0947 to speak to us today.



www.bristolpractice.co.uk

Dr. Emma Patch



FINANCE

James Kenward - Independent Financial Adviser

Harold Stephens

50 High Street, Westbury on Trym, Bristol BS9 3DZ
T: 0117 3636212



E: office@haroldstephens.co.uk

Bringing estate planning and financial planning together

HOW confident are you that your estate plan and financial plans work together effectively?

Estate planning and financial planning are closely connected, yet many people do not realise how much one can affect the other. When these plans are not aligned, it can create unnecessary stress for your loved ones at an already difficult time. Making sure everything works together now can ease that burden and give you greater peace of mind.

You may already have a Will and/or Lasting Powers of Attorney (LPAs), but if you have not considered how these important legal arrangements interact with care funding decisions, inheritance tax planning, or your pension, now is the time to review the bigger picture.

We have seen first-hand the impact of families not having their affairs in order, and the stress this can cause when straightforward steps could

have been taken earlier to prevent it.

Harold Stephens offers specialist independent later life financial planning alongside legal services, helping you bring your estate and financial plans together with confidence under one roof.

We are offering free one-hour seminars to help you start joining up your plans. Come along to identify any gaps in your current arrangements, explore ways to strengthen your position, and understand the practical steps you can take.

We will cover Wills, LPAs, and trusts, including the basics and the practical process; how LPAs can affect care funding and wealth planning; how to structure your financial plans for wealth preservation; and how to avoid unintended outcomes.

Places are limited, so booking is essential if you would like to join us on one of the dates below. Alternatively, please feel free to get

in touch for a complimentary initial chat to see how we may be able to help review your situation.

Tuesday 23rd June – 2.30pm – 3.30pm – St Peter’s church, The Drive, Henleaze BS9 4LD

Tuesday 30th June – 6pm – 7pm – Stoke Lodge, Shirehampton Road, Stoke Bishop BS9 1BN

Wednesday 1st July – 2.30pm – 3.30pm – St Peter’s church, The Drive, Henleaze BS9 4LD

Tuesday 7th July – 10am – 11am – Henleaze Bowling Club, Grange Ct Road, Henleaze BS9 4DR

To book your place, call **0117 3636 212** or email community@haroldstephens.co.uk. 50 High Street, Westbury on Trym, Bristol BS9 3DZ



If you would like a relaxed chat about how to manage your assets in later life, then we are on hand to deliver it the good old-fashioned way – face to face right here in your local community.

Inheritance Tax Planning

Savings & Investments

Wills & Power of Attorney

Long-Term Care Planning

Pensions & Retirement

Trusts



50 High Street, Westbury on Trym, Bristol BS9 3DZ

0117 3636 212

office@haroldstephens.co.uk

www.haroldstephens.co.uk



PUZZLE PAGE

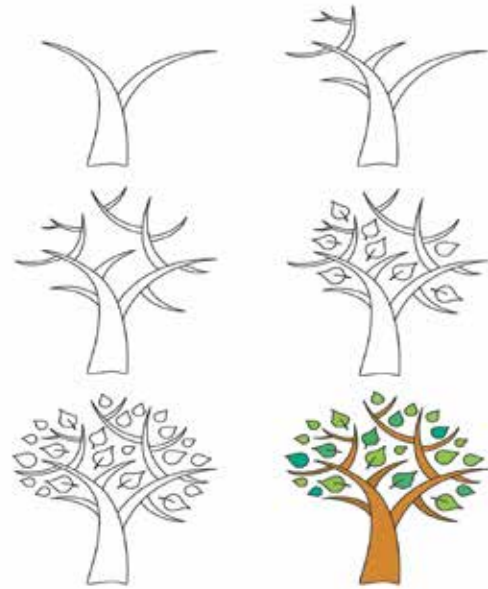
Sudoku

Each row, column and square (9 spaces each) needs to be filled out with the numbers 1-9, without repeating any numbers within the row, column or square.

5		7						
					8		4	6
							3	
			1			5		
6				4			2	
2	3				5		6	
		2			9			
	6		5					9
	8		6		3			

For younger readers

Learn to Draw a Summer Tree



Learn to Draw with www.ActivityVillage.co.uk - Keeping Kids Busy

Txtpert

Theme: Animals

1			2				3	
4		5			6			
		7		8				
9								
				10				

Use the phone keypad to decode the clues.
For example: 2 could be A, B or C ... and 5678 could be LOST



Across

- 1 527364 (6)
- 4 6423 (4)
- 6 262 (3)
- 7 728837 (6)
- 9 744 (3)
- 10 5466 (4)

Down

- 1 5262 (4)
- 2 363 (3)
- 3 36237626 (8)
- 5 26744 (5)
- 6 228 (3)
- 8 8245 (4)
- 9 784 (3)

Easier sudoku

Rules the same as the Fiend, but only four numbers in each box, row and column

1			4	2				
	5	3	1			4		
			1					
5			2	4				
			4			3		

Solutions

Txtpert

N	O	I	L	O	L			D
V			I		I			U
W			V		G		I	P
R	E	T	V	A	V			
E			A					B
B	O	C			C		I	M
O					O			V
D		G	O	D	P	V	L	I

OFFER OF THE MONTH



Colonial

5 DOORS
FITTED IN YOUR HOME FOR ONLY

£659

Any 5 white primed 'Suffolk' or 'Colonial' doors complete with a choice of 7 different handles, hinges and latch. Fitted in your home.

DOOR EXPRESS
08000 973333 - 07767 376770

A PHONE CALL WILL SECURE YOUR FITTING ORDER DATE
Offer applies to door sizes 78"x30" & 78"x27"



Suffolk

www.doorexpressouthwest.co.uk



DISTRIBUTORS REQUIRED

to deliver our monthly newspapers in the following areas:

CLIFTON, BISHOPSTON, ST ANDREWS, HENLEAZE, WESTBURY PARK & WESTBURY ON TRYM

If you are reliable and fit then this is a role suitable for all age groups (minimum age 13 years). The newspapers will be delivered to your home ready for distributing each month. Routes range in size (approx 250 - 500 newspapers).

Email: distribution@voicepressltd.co.uk

Please provide your name, address and contact telephone number and which area you are interested in.

SPORT

Canford bowlers begin new chapter

ESTABLISHED in 1913, Canford Bowling Club (CBC) has long been a familiar part of the local community. Now, more than a century later, the club is beginning an exciting new chapter.

CBC has recently agreed a 25-year lease with Bristol City Council, giving members greater responsibility – and greater opportunity – for the future of the site. Under the new agreement, the club will take full responsibility for the bowling green, surrounding grounds and the clubhouse itself.

This positive step comes at a time when several lawn bowls clubs have sadly closed in recent years, including Port of Bristol and BAC. Their loss highlights the challenges facing many traditional community sports clubs, yet bowls remains much more than just a game. For many people, particularly older adults, bowling clubs provide a vital social space, helping to reduce loneliness and isolation, while keeping people active and connected.

CBC's commitment to securing the site for the next 25 years bucks the wider trend and demonstrates a determination to protect and grow this much-loved community facility. Alongside the new lease, the club has also become a Community Amateur Sports Club (CASC), a structure designed to support the



smooth running and long-term sustainability of the club, while helping to safeguard the green for future generations of bowlers.

The new arrangement also opens the door to wider possibilities. With more freedom to make improvements to the clubhouse, the club hopes to create a more flexible and welcoming social space for members and visitors alike. The aim is not just to maintain a thriving bowls club, but also to develop the venue as a place where the community can come together.

CBC has already demonstrated its

community spirit, welcoming members of the Ardagh Bowling Club when they were unable to continue playing on Horfield Common. Now the focus is firmly on preserving a much-loved local facility, while making it even more accessible and inclusive for the community.

New members, both experienced bowlers and complete beginners, are always welcome. For those new to the sport, a series of free coaching sessions is offered from experienced, qualified coaches. All equipment is provided.

For more information, please email: canfordbowlingclub@gmail.com

NEWS FROM SusWoT

Keep it clean

Lots of people across the city get involved in litter picking. According to Bristol Waste, 520 people participated in this year's Great Bristol Spring Clean, collecting over 850 sacks of rubbish. SusWoT's group litter picks contributed over 100 bags alongside bulky items such as fly-tipped fridges, furniture and mattresses.

While these high-profile activities bring an immediate improvement, the long-term difference is made by individuals who make sure that the area stays clean. In Westbury-on-Trym we have around 50 volunteers who keep a nearby road or small patch of green space clean at a time to suit them. SusWoT provides all the equipment and support to make this as easy as possible.

We are rolling this approach out beyond Westbury with support from the Bristol Civic Society and the Quartet Community Foundation. Our Friday and Sunday group litter picks have been focussing on deep-cleaning Southmead for

a few months now and we are actively recruiting volunteers to keep it clean. We already have 20 new recruits and are looking for another 30-40 people to help.

Himalayan Balsam



Himalayn Balsam in Blaise

Himalayan Balsam is an invasive plant which spreads rapidly,

smothers other plants and erodes the riverbanks. SusWoT and Trout in the Trym volunteers have been working to eradicate it from the Trym and Hazel Brook for several years. There is far less of it now than in previous years, but as each plant can produce 700 seeds, we need to ensure it doesn't take hold again.

To destroy Himalayan Balsam – you should pull it out carefully (including the roots), crush the stem and leave it out to dry. We are keen to recruit volunteers to monitor specific sections along the river, and we encourage people to let us know if they spot any Himalayan Balsam that they can't deal with themselves.

Retrofit Neighbours

– Kate's story

Last June we invested in a battery to store excess solar-generated power and off-peak grid electricity for use during the day. Our electricity tariff is 10p per kWh between 12 and 5am and 26p during the day.

The equipment was wall-mounted in our front porch, close

to the mains and outside but protected from the elements. Each night the amount of electricity stored is adjusted automatically using the weather forecast and our expected daily consumption.

With the battery in place, we can avoid using peak-time electricity entirely, and in the summer, we often generate enough solar energy to bypass off-peak grid electricity as well.

People's Emergency Briefing

There will be a screening of the People's Emergency Briefing at the Bradbury Hall (BS9 4BT) on 14 June from 7:30pm to 9:30pm. The 45-minute film presents the latest evidence on the climate and nature crisis and will be followed by a guided discussion. Tickets are available from Eventbrite and further details about the film can be found at www.nebriefing.org

For information about any of SusWoT's activities, visit www.suswot.org.uk or email suswot2050@gmail.com.

Liz Viggars

TURNER'S VISION

Exciting news at Henleaze and beyond

THERE'S been a lot happening behind the scenes recently at the opticians, and thankfully, it's all very exciting news.

Firstly, due to growing demand, we're delighted to share that our Henleaze practice is now expanding its eye care clinics and opening on Fridays too. You now have a greater choice of appointments to choose from. More appointments, improved flexibility, and even better access to the thorough eye care our patients increasingly tell us they value.

Over recent years we've seen significant growth across both practices. More families. More specialist care. More patients needing the time, reassurance and a genuinely personal approach to eye health and vision you've come to expect from our family Optometry practices.

And whilst we're talking about our Henleaze practice growth... we also have another very big announcement on the other side of Bristol too.

After more than 50 years in

Fishponds, we're moving the practice to a brand-new larger home in Downend. We've taken over the now empty former Fabrics Plus shop on Downend high street, a place many of us remember fondly.

Now before anyone worries, this is very much a positive move and great news from both practices!

The truth is, the Fishponds practice has simply outgrown the building. Whilst we're incredibly proud of its history (Philip and Harold first moved there in the 1970s), the rooms are now too small for the level of clinical care and specialist services we increasingly provide.

We've reached the point where we're working around the building, rather than the building working for our patients.

The new Downend practice will allow:

- Better accessibility
- Larger consulting rooms
- Enhanced facilities and technology
- More comfortable surroundings

• And an even better patient experience overall

In many ways, both of these announcements reflect the same simple idea:

We are growing so we can care for people better.

At the heart of everything we do remains a philosophy we discuss regularly as a team:

**'Effortless vision isn't a luxury
- it's the standard'**

Whether that means routine eye care, specialist advice, dry eye treatment, children's vision concerns or simply helping someone feel confident and comfortable in their glasses... we believe patients deserve time, attention and genuinely thoughtful care.

As a family practice, we feel enormously grateful for the support our local communities continue to show us. So whether you visit us in Henleaze, Fishponds or soon in Downend, thank you for being part of our journey!

This is an exciting new chapter for Turners Opticians, and we're



Peter Turner
of Turners Opticians

0117 962 2474
0117 965 4434
www.turnersopticians.co.uk

only just getting started.

To find out more or to book an appointment, visit our website or contact our friendly team by calling our Henleaze practice on **0117 9622 474** or our Fishponds practice on **0117 965 4434**.

Peter

Peter Turner is an Independent Prescribing Senior Optometrist at Turners Opticians in Bristol. He also works as a Senior Medical Optometrist at Bristol Eye Hospital and has a specialist interest in visual development and performance.




Turners Opticians
Trusted Since 1939

Family Eye Care - For Generations

57 Henleaze Road
Bristol BS9 4JT
0117 962 2474

768 Fishponds Road
Bristol BS16 3UA
0117 965 4434

eyecareteam@turnersopticians.co.uk
www.turnersopticians.co.uk

Turners Eye Care Ltd T/A Turners Opticians Incorporated in England & Wales Reg No. 8201460

NEWS

A NEW initiative recently set up by the Lockleaze Neighbourhood Trust (LNT) sees residents coming together with their own ideas and skills to share, learn and meet new neighbours.

The Friendly Thursday sessions are being held every week from 1-3pm at the Hub in Gainsborough Square. They are resident-led groups with locals planning, setting up and delivering the activities themselves.

The first session, held on April

Such a close-knit community!

30, was deemed a great success, with Maria Perrett of the LNT thanking all those involved and explaining: "This group will meet every week to help you connect, learn and achieve. On the first day, 13 local residents attended and by the end of the session two had learned how to crochet, two had learned how to set up and use the sewing machines and everyone completed something!

We had crochet keyrings, aprons, shopping bags and even a decorative panel to repair a favourite bag. Two residents have taught others how to make clothes, so it's very inter-generational too."

The group decided to create affordable gifts from pre-loved items to sell at the upcoming Lockleaze Climate and Nature Festival. The funds raised will

help the group to purchase any new equipment or tools.

Residents' Ideas is part of the Lockleaze Together project.

If you have a skill to share, would like to learn something new or want the opportunity to meet neighbours come along, every Thursday 1-3pm. All are welcome. Free to attend. No booking required. The venue is accessible and accompanied children are welcome. If you have an idea to action get in touch: maria@lockleazent.co.uk

AERIAL SPECIALISTS

THE AERIAL MAN
TV Aerial and Satellite Specialist

Poor Reception Problems Solved
OAP Discount Digital Aerials Satellites
Two Year Guarantee Free Quote
CCTV & Ring Doorbells 



Affordable Prices - Reliable Service
0117 967 9028 
www.theaerialman.co.uk | info@theaerialman.co.uk

BOILER REPAIRS

GAS BOILER REPAIRS
Boiler upgrades
Servicing | Breakdowns

- More than 30 years' experience
- All BS postcodes covered
- Fast response and quality workmanship

Call an engineer anytime for helpful advice and support.

 **07785 922 309** 
www.combiheat.co.uk

BATHROOMS

 **Blue Flame Services**

**BATHROOMS
SHOWER ROOM
KITCHENS**



**FULL KITCHEN AND BATHROOM
DESIGN & INSTALLATION SERVICE**

*En-suites / Under Stair Cloakrooms
Shower Rooms*

0117 9600 296 / 0797 0122 137
www.blueflameservice.co.uk
Info@BlueFlameService.co.uk

231 Lodge Causeway,
Fishponds, Bristol, BS16 3RA

BUILDING SERVICES

BENJAMIN JACKSON
BUILDING SERVICES
Creating and maintaining your perfect property, inside and out!

- Home Renovations
- Brickwork & Blockwork
- Plastering & Rendering
- Painting & Decorating
- Landscaping & Patios

Tel: 07504 696345
benjamin.job@qualityservice.com
www.bjacksonbuilding.com

CARPENTRY

P B Carpentry
BRISTOL

Local carpenter with more than 30 years experience

- All aspects of carpentry undertaken
- Specialism in fitting internal doors.

Please email or phone for a competitive quote.
Mob: 07837 891047
Email: pbcarpentry369@gmail.com

BUILDING SERVICES


TBE
CONSTRUCTION LTD



Scan Me!

CARPET CLEANING


Team Carpet
Clean Bristol

07400 764500

Cleaning Carpets, Sofas
& Hard Floors too

Over 300 5★ Google
Reviews

ELECTRICIANS

Electrician
www.alliedelectrical.co.uk

Do you find it difficult to get someone to come and do a small job?

- Extra lights • Additional sockets.
- Replacement fuseboards • Rewires
- Landlord & homebuyers inspections.

Call Nick on 0117 2872082

I will assure you of a quick response and a reasonably priced service

ELECTRICIANS

Elderwood Electrical
Electrical Installation, Maintenance and Testing

Free Quotes
Inspection and Testing
Landlord Certificates
New builds and Extensions
Extra Sockets and Lights
Fire Alarms, Smoke Detectors



www.ElderwoodElectrical.com
Office - 0117 9322379
Mobile - 07725 058581

ELECTRICIANS

atom electrical
specialist domestic installers



NICEIC DOMESTIC INSTALLER

All types of domestic electrical work undertaken, from changing a light fitting to full rewires.

For an efficient, friendly, reliable, local electrical service... call **Oliver** on 07747866436 or 01179602974

FREE Quotations

www.atomelectrical.co.uk
info@atomelectrical.co.uk

EXTENSIONS & RENOVATIONS

Blue Flame Services

EXTENSIONS & RENOVATIONS



WE CAN DO IT ALL!

DESIGN & PLANNING • ARCHITECTURAL SERVICES
EXTENSIONS • GARAGE CONVERSIONS
FULL HOUSE RENOVATIONS • HMO REFURBISHMENTS
FULL PLUMBING/HEATING AND ELECTRICAL SERVICES • WINDOWS AND DOORS

0117 9600 296 / 0797 0122 137
www.blueflameservice.co.uk
Info@BlueFlameService.co.uk

231 Lodge Causeway,
Fishponds, Bristol, BS16 3RA

FLOOR SANDING

Mob: 07944 178 572
richardsweet10@yahoo.co.uk

FLOOR SANDING

Est. 22 Years
Top Quality Finish
Competitive Prices
Environmentally Friendly Products
NOW Dust Free

FURNISHINGS

Redland Sofas & Curtains



15% OFF REUPHOLSTERY IN JUNE

CURTAINS & UPHOLSTERY
MADE-TO-MEASURE

- curtains
- ottomans
- roman blinds
- headboards
- sofas & chairs
- designer fabrics
- reupholstery
- interior design
- footstools
- styling

Visit our showroom at:
110 Coldharbour Road, BS6 7SB Tel: 0117 924 8383
info@redlandsofaandcurtains.co.uk
www.redlandsofasandcurtains.co.uk

GARDEN SERVICES

AFRESH GARDENS

For a quality, comprehensive and efficient garden service

- Maintenance • Make over
- Private / Commercial

Contact Chris Knowles RHs dip, Nch hort

T: 07794 701637
E: christopher.knowles@mypostoffice.co.uk

GARDEN SERVICES

Muddy Shoots

Our Services

- Garden Maintenance
- Pruning
- Weeding
- Clearance
- Planting Advice
- Organic veg growing ideas
- Hedge/small tree pruning
- Cutting and planting
- Pressure washing



CHAT WITH US ON WHATSAPP

Free quote or advice on planting call

Katie: 077233 04420
muddyshoots@outlook.com

GARDEN SERVICES

D ATTWELL & SONS LANDSCAPING

Whether you're looking for new patios, garden fencing, new decking installations, or turf laying our landscapers are here to help

Call now for a free quote
07960 681921

www.dattwellandsonslandscaping.co.uk

GARDEN SERVICES

Blossom GARDEN SERVICES

- PLANT AND SHRUB CARE
- WEEDING
- PRUNING (incl FRUIT TREES)
- WOOD STAINING
- GRASS CUTTING
- PLANTING SCHEMES
- HEDGE TRIMMING

Visit **www.blossom-gardening.co.uk**
Email **info@blossom-gardening.co.uk**
Call **07794 994262**

HOUSE & RUBBISH CLEARANCE



**HOUSE CLEARANCE
GARAGE CLEARANCE
GARDEN CLEARANCE
GENERAL RUBBISH CLEARANCE**

FULLY LICENSED AND INSURED

MINIMUM COLLECTION FROM £59 INC VAT - FREE QUOTATIONS

Visit us: www.junkmonsters.co.uk
Email us: info@junkmonsters.co.uk
Call us: 07592 506 003

PAINTING & DECORATING

**S.DAMSELL
PAINTING &
DECORATING**

- Interior & Exterior & wallpapering
- Small maintenance works & repairs
- Fully insured • Free quotes
- City & Guilds served • 40 years experience

Mobile 07971 252715
Email stephen.damsell@hotmail.co.uk

PLUMBING

Electrical & Plumbing

All electrical work
from complete rewire to additional sockets

Domestic plumbing & tiling
Showers, undertile heating etc.
City & Guilds and NVQ Part P compliant
Free estimates

Call to discuss your requirements
Matt Pederick

07958 753588

LOCKSMITHS



Your Local, Trusted Locksmith

- UPVC door repair
- Lock replacements
- Lockouts & more

0117 901 22 61
info@gibbslocksmiths.com

PAINTING & DECORATING



Renovation ■ Painter ■ Tiler ■ Decorator

- Interior & Exterior Masonry ■ Tiling
- Interior & Facade Painting
- No Job Too Small ■ Free Quote
- 17 Years Experience

T: 0117 382 7716 / 07557 335 956
E: dacriscobuilder9@gmail.com

PLUMBING SERVICES



COPPERMILL HEATING

PLUMBING & HEATING ENGINEERS

- CENTRAL HEATING INSTALLATION & REPAIR
- PLUMBING INSTALLATION & REPAIR
- GAS, OIL & LPG • POWERFLUSHING
- LANDLORD CERTIFICATES • BOILER SERVICING

FREE ESTIMATES

T: 07769 693300

WWW.COPPERMILLHEATING.COM



PAINTING & DECORATING



Stephen Carter
Painter & Decorator

**Professional
Decorating Services**

Painting & Decorating Association
Accredited (with PDA guarantee)

For a free competitive quotation:

07786 513788 or 0117 907 6997

Cranside Avenue, Redland, BS6 7RA

www.carterdecorating.co.uk

PAINTING & DECORATING



Father and Son Business

**Painting, Decorating,
Plastering, Carpentry
Custom Bathrooms,
General Maintenance**

Most Jobs Covered - Free Quotes over Bristol

Sam Batchelor - 07710 48 09 04
batchelorrenovations.com

PLUMBING

The Bristol Plumber

Bathroom & Kitchen Installation

**10+ Years Experience, Tiling,
Bathroom Fitting, Kitchens,
Radiators, All Small Jobs**

No VAT, Free no obligation quote

07540607626

ed@thebristolplumber.com

facebook.com/thebristolplumber

PAINTING & DECORATING



MJT DECORATING

Interior & Exterior
For a Friendly & Reliable Local Service

Contact Mike Toye
8 Westfield Road
Westbury-on-Trym
BS9 3HG

Tel: 01179 500 387
Mob: 07971 849 895

Free Estimates/References Available

PLUMBING

LOW COST PLUMBING



- Taps, Washers ✓
- Toilets, Cisterns ✓
- Leaks, Blockages ✓
- Tanks, Overflows ✓
- Lead Pipes, Stopcocks....etc... ✓

OAP DISCOUNTS and NO VAT

0117 956 4475

PROPERTY MAINTENANCE



**BUILDING and
MAINTENANCE
SOLUTIONS**

- Property and Landlord maintenance & repair
- Garden fencing repair/new build and garden landscaping
- Shed repairs, new build, felt repair or replacement and maintenance
- Internal/external painting & decorating

Free estimates - all work insured & guaranteed

Call Craig on: **07563 883211**
Email: info@crjco.uk



Nexus[®]

Pharmacy & Health Clinics

**Did you know Nexus Pharmacy
Westbury is now re-open in
Westbury Medical Centre?**

It's under new ownership!

**Please visit us to change your
nomination, call us on
0117 962 3415 or scan the QR
below to send us an email.**



nexuspharmacygroup.co.uk